

SOUTHERN BELTWAY

I-79 TO MON/FAYETTE EXPRESSWAY



Section 2

Tan Alternative

(Revised: June 2005)

I-79 to Mon/Fayette Expressway
 Section 2 Tan Alternative
 Photo Presentation

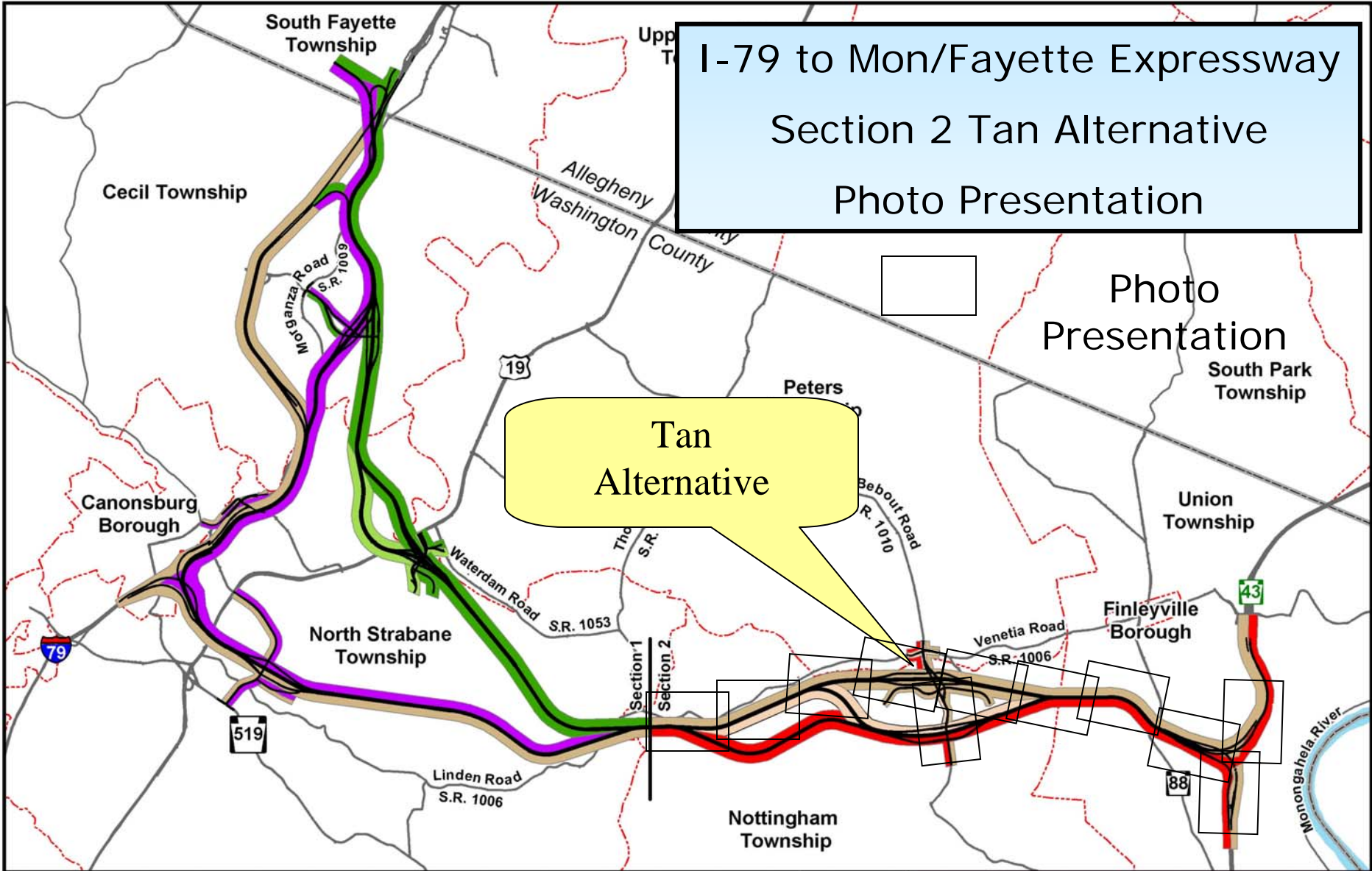


Photo Presentation
 South Park Township

Tan Alternative

Section 1		Section 2			
	Green Alternative Option 1A		Tan Alternative		Municipal Boundary
	Green Alternative Option 1B		Red Alternative		County Boundary
	Purple Alternative		Tan-Red Alternative		
	Tan Alternative				



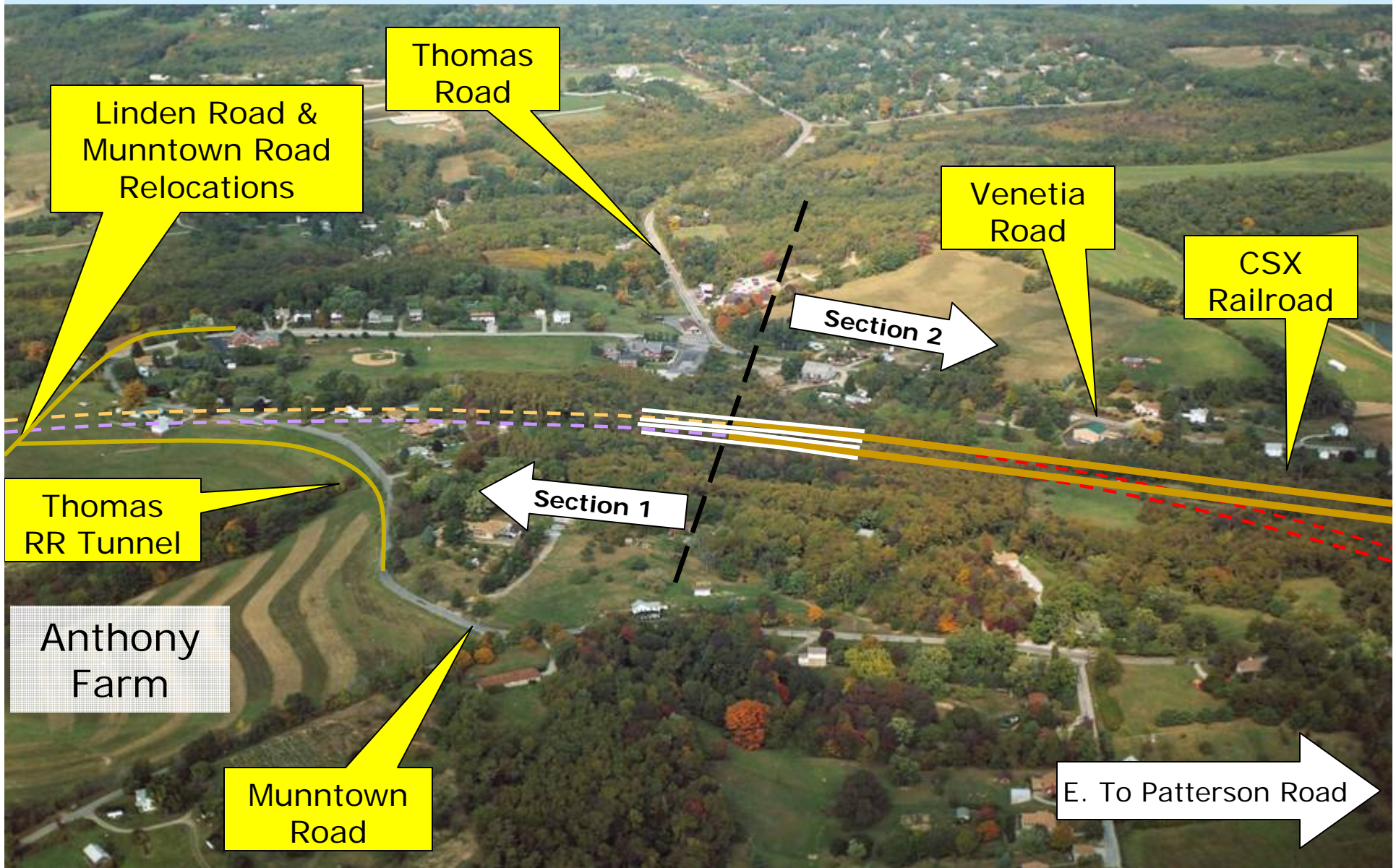
Southern Beltway Transportation Project
I-79 to Mon/Fayette Expressway
Alternatives Advanced for Detailed Study

0 1 2 3 Kilometers
 0 1 2 3 Miles

Figure 1

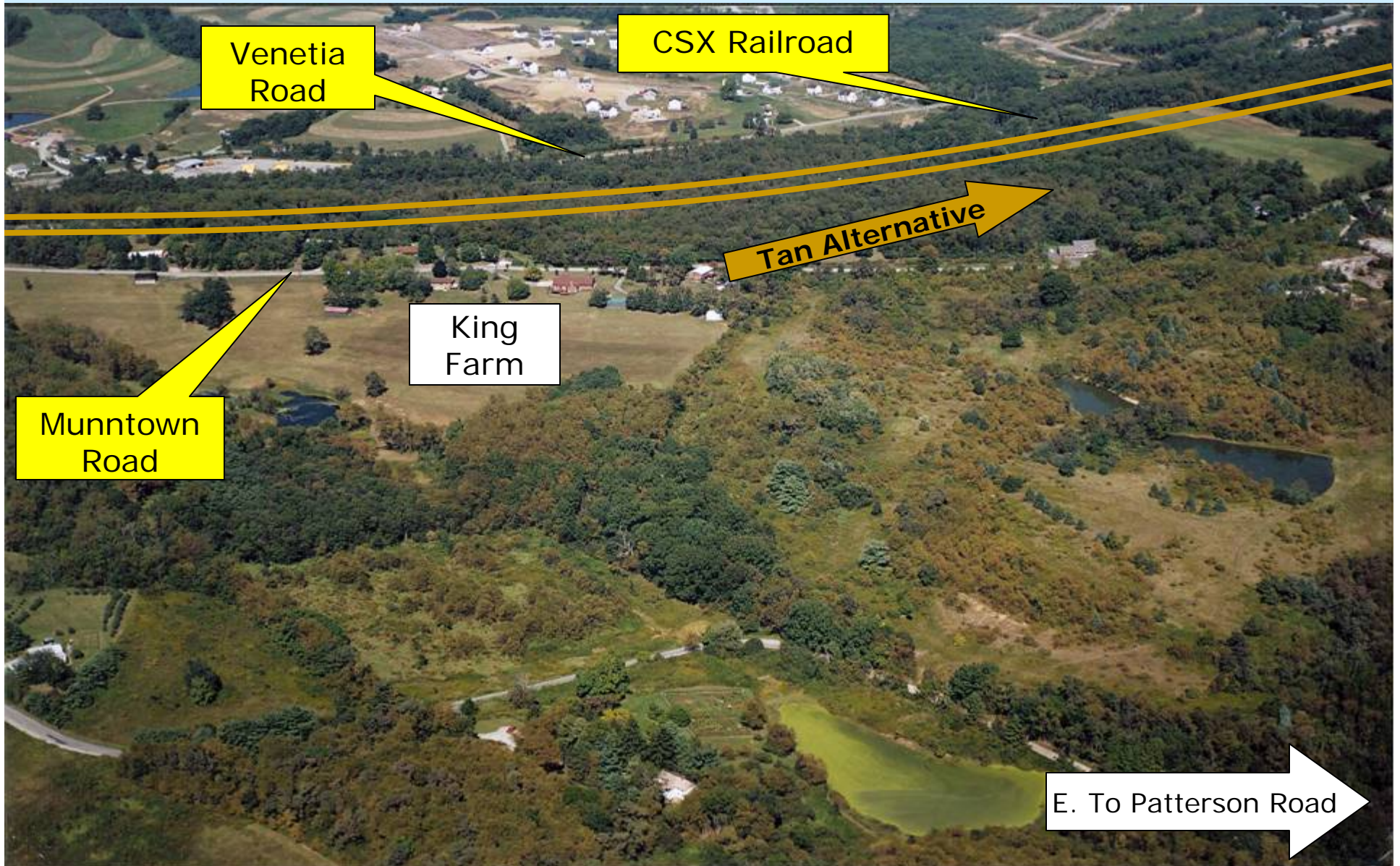
I-79 to Mon/Fayette Expressway – Tan Alternative – Section 2

Section 1 / Section 2 would meet near Linden Road at Munntown Road. The Tan Alternative would be located south of CSX Railroad.



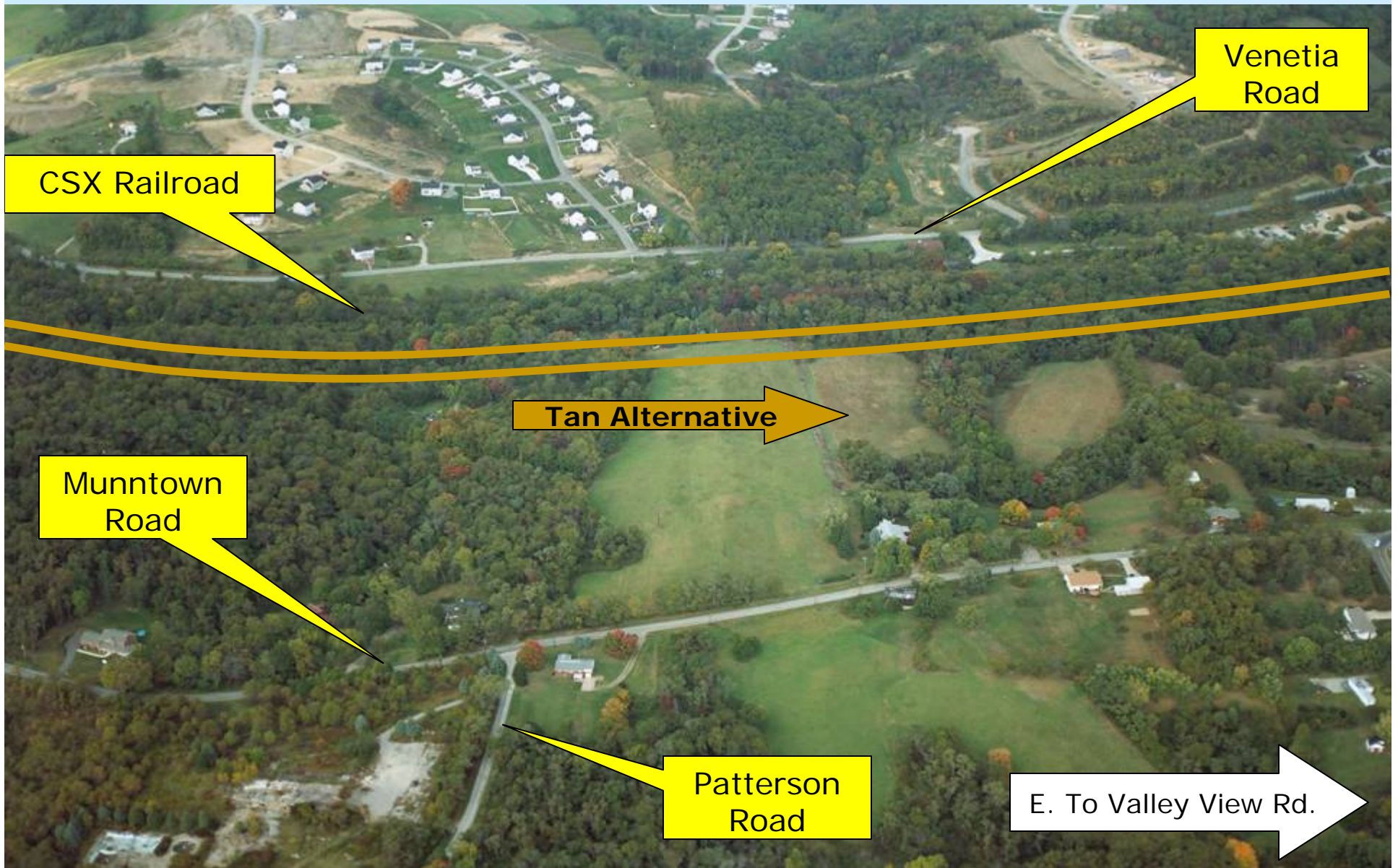
I-79 to Mon/Fayette Expressway – Tan Alternative – Section 2

The Tan Alternative would run between the CSX Railroad and Munntown Road in the western portion of Nottingham Township.



I-79 to Mon/Fayette Expressway – Tan Alternative – Section 2

The Tan Alternative would continue running south of the CSX Railroad in Nottingham Township, passing through mostly wooded lands.



CSX Railroad

Venetia Road

Tan Alternative

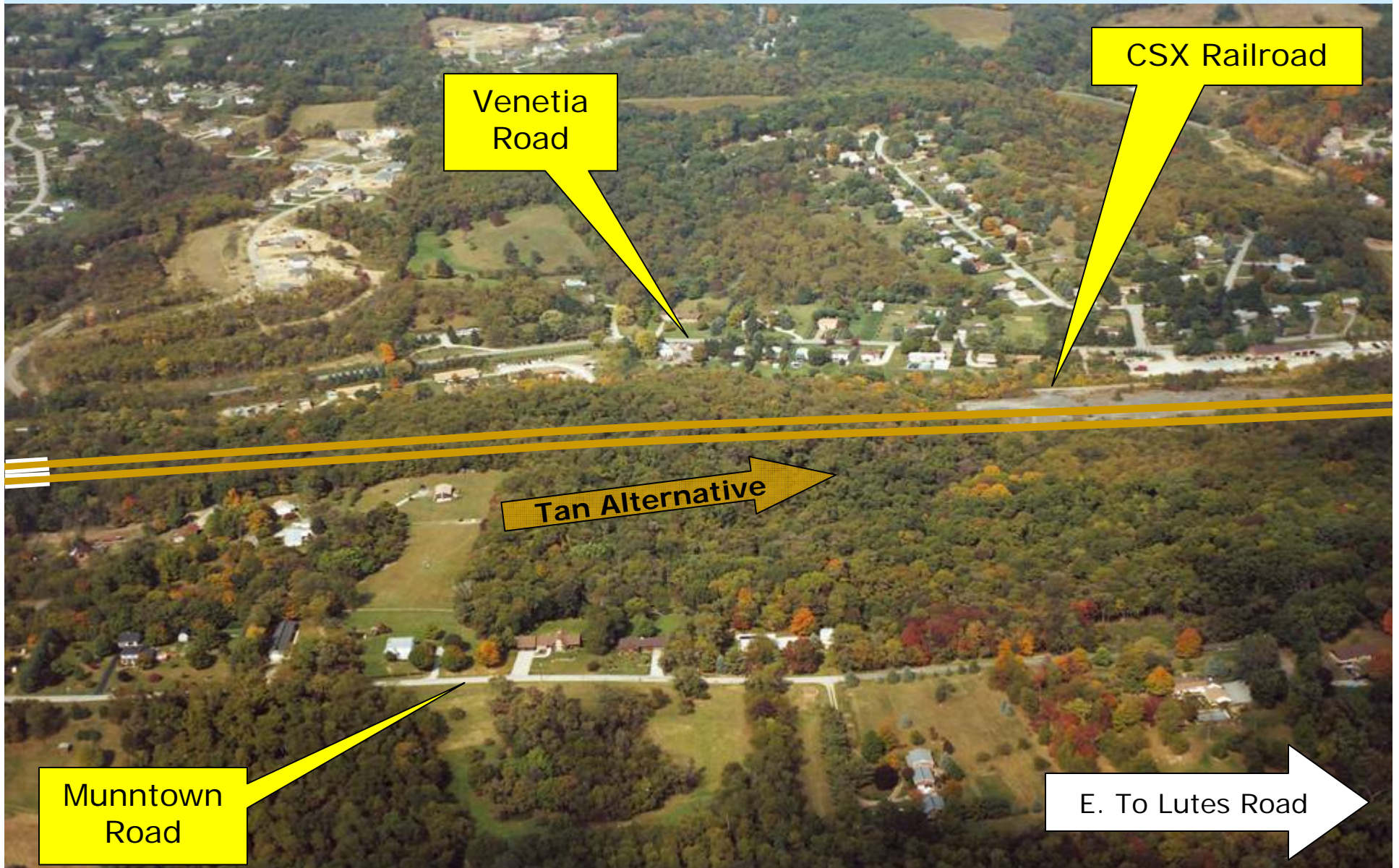
Munntown Road

Patterson Road

E. To Valley View Rd.

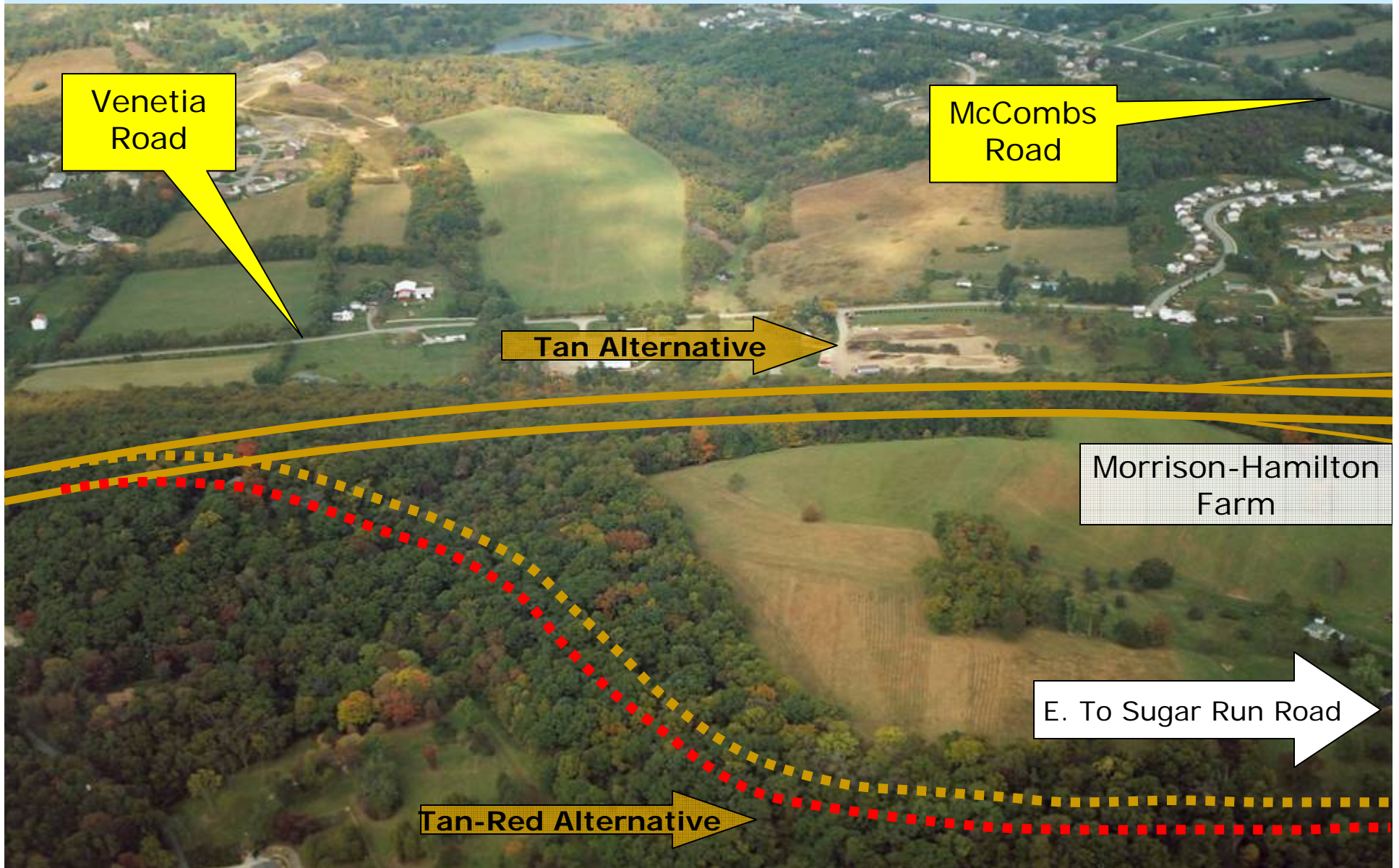
I-79 to Mon/Fayette Expressway – Tan Alternative – Section 2

The Tan Alternative would run between the CSX Railroad and Munntown Road in Nottingham Township.



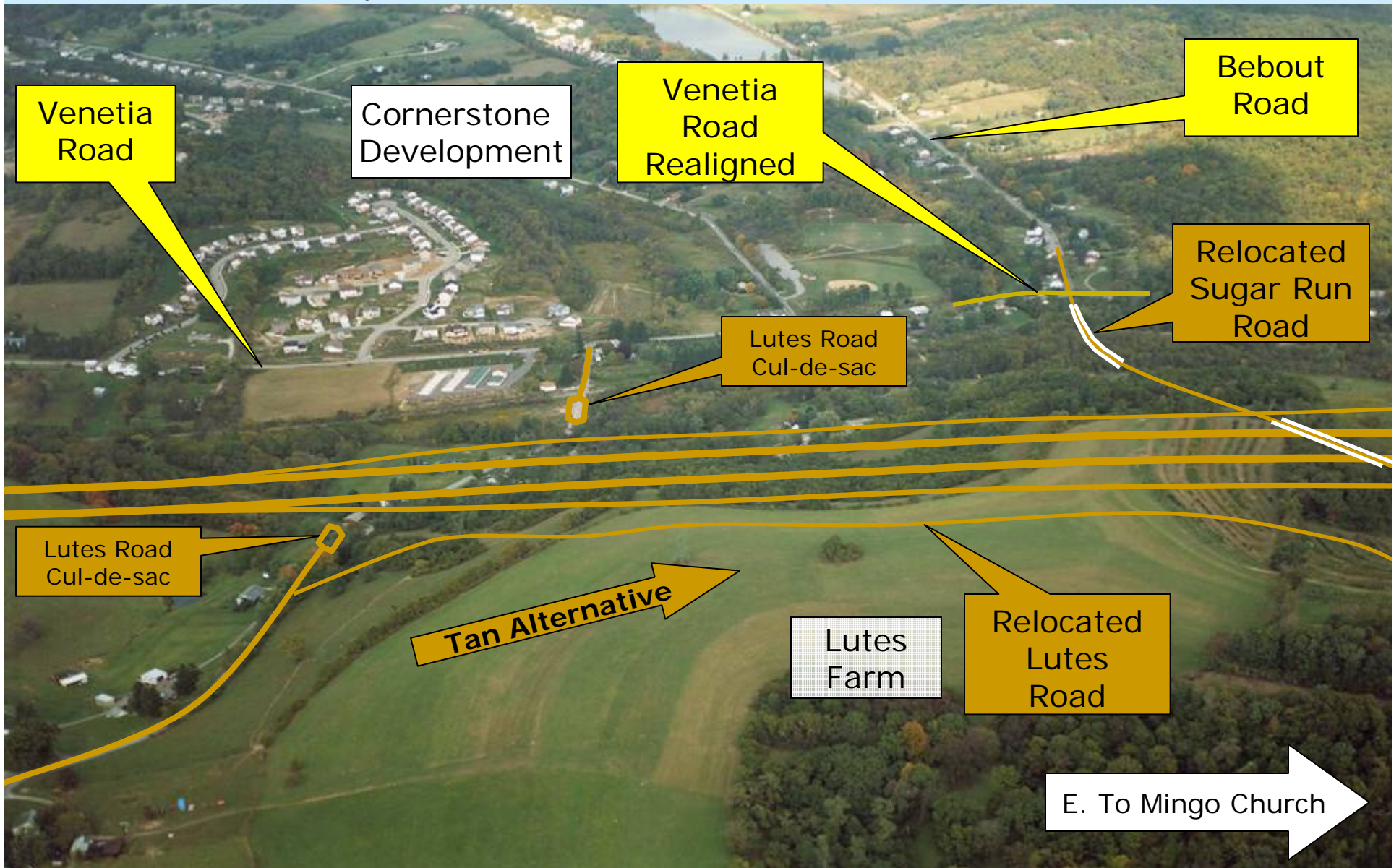
I-79 to Mon/Fayette Expressway – Tan Alternative – Section 2

The Tan Alternative would continue south paralleling the CSX Railroad with the ramps for the Sugar Run Road Interchange beginning near Lutes Road.



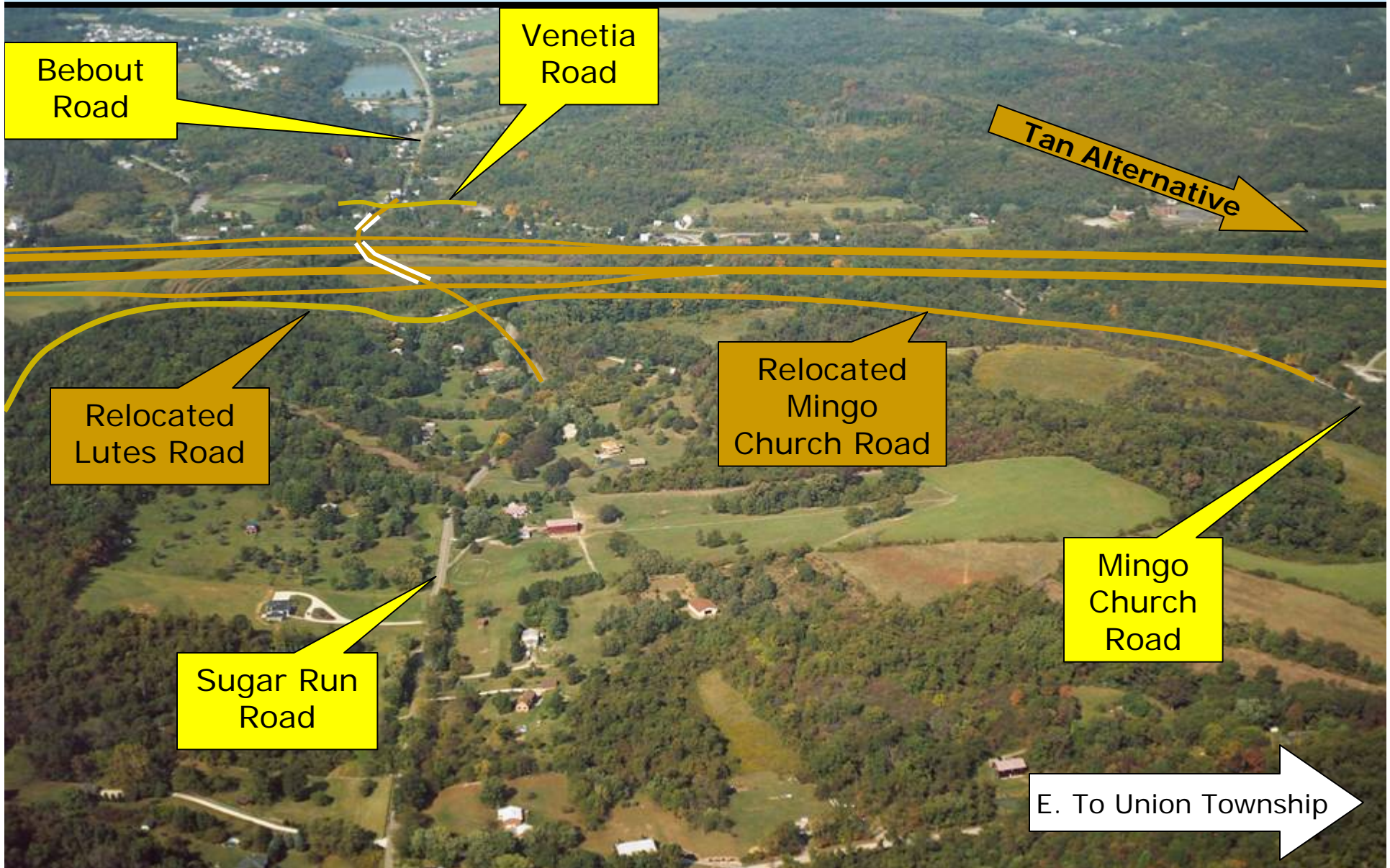
I-79 to Mon/Fayette Expressway – Tan Alternative – Section 2

The Tan Alternative would interchange with Sugar Run Road in Nottingham Township. Sugar Run Road would be relocated to meet with Bebout Road, and a portion of Lutes Road would be relocated.



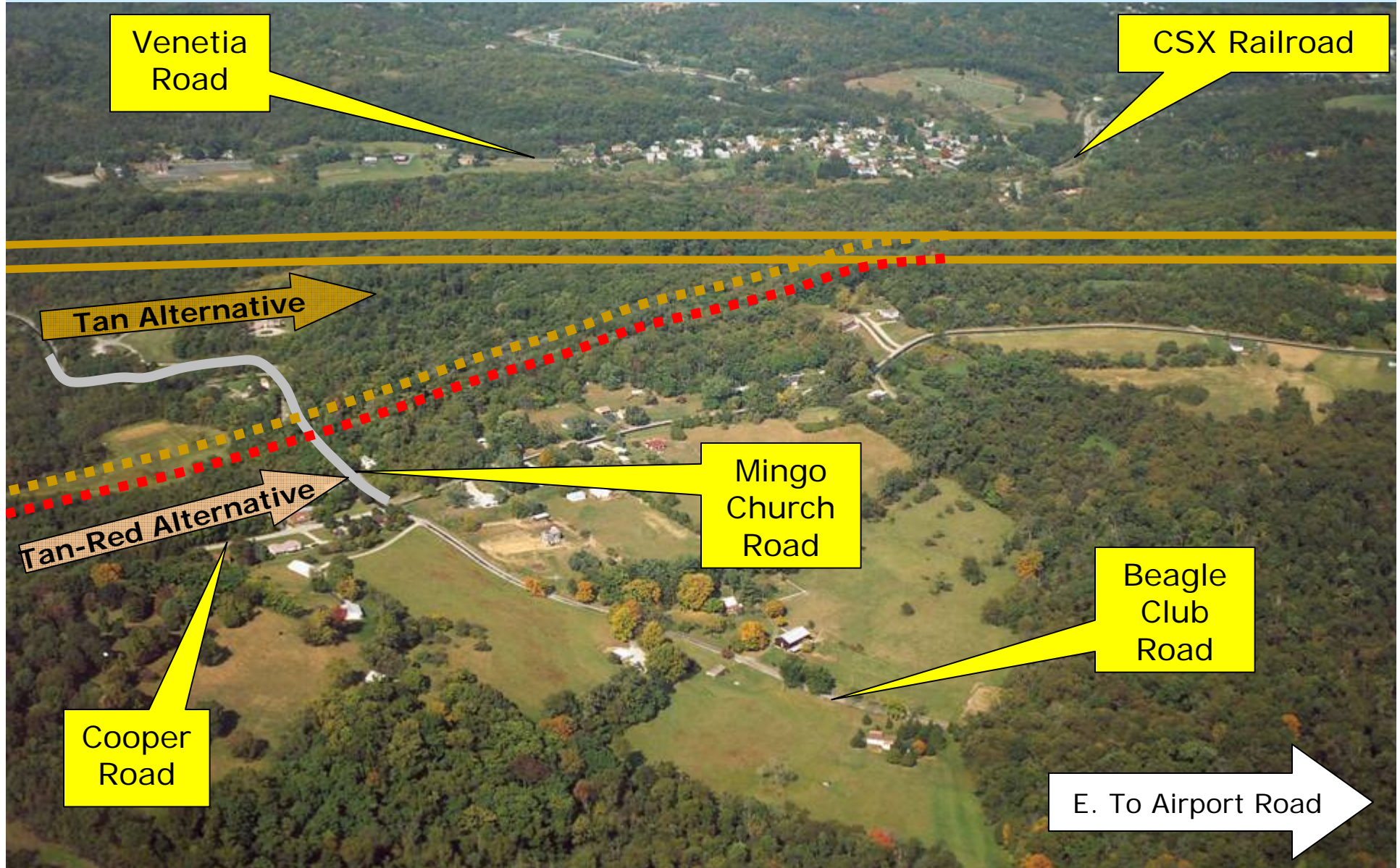
I-79 to Mon/Fayette Expressway – Tan Alternative – Section 2

The Tan Alternative would interchange with Sugar Run Road. Mingo Church Road would be relocated to meet with Sugar Run Road.

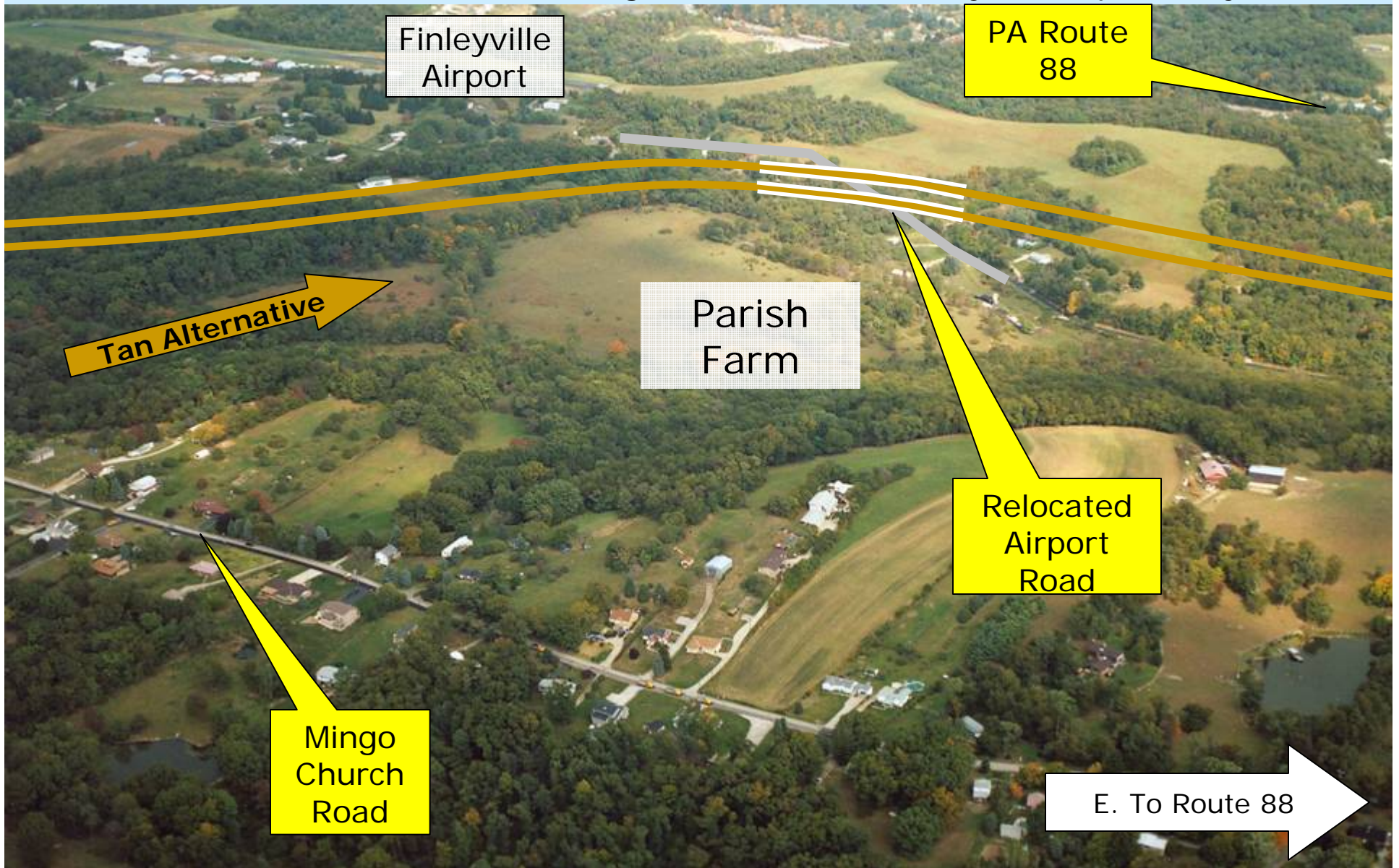


I-79 to Mon/Fayette Expressway – Tan Alternative – Section 2

The Tan Alternative would begin to shift towards the southeast to avoid residential areas and the Finleyville Airport. The Tan Alternative would meet the Tan-Red Alternative near the slag stockpile area north of Mingo Church Road.

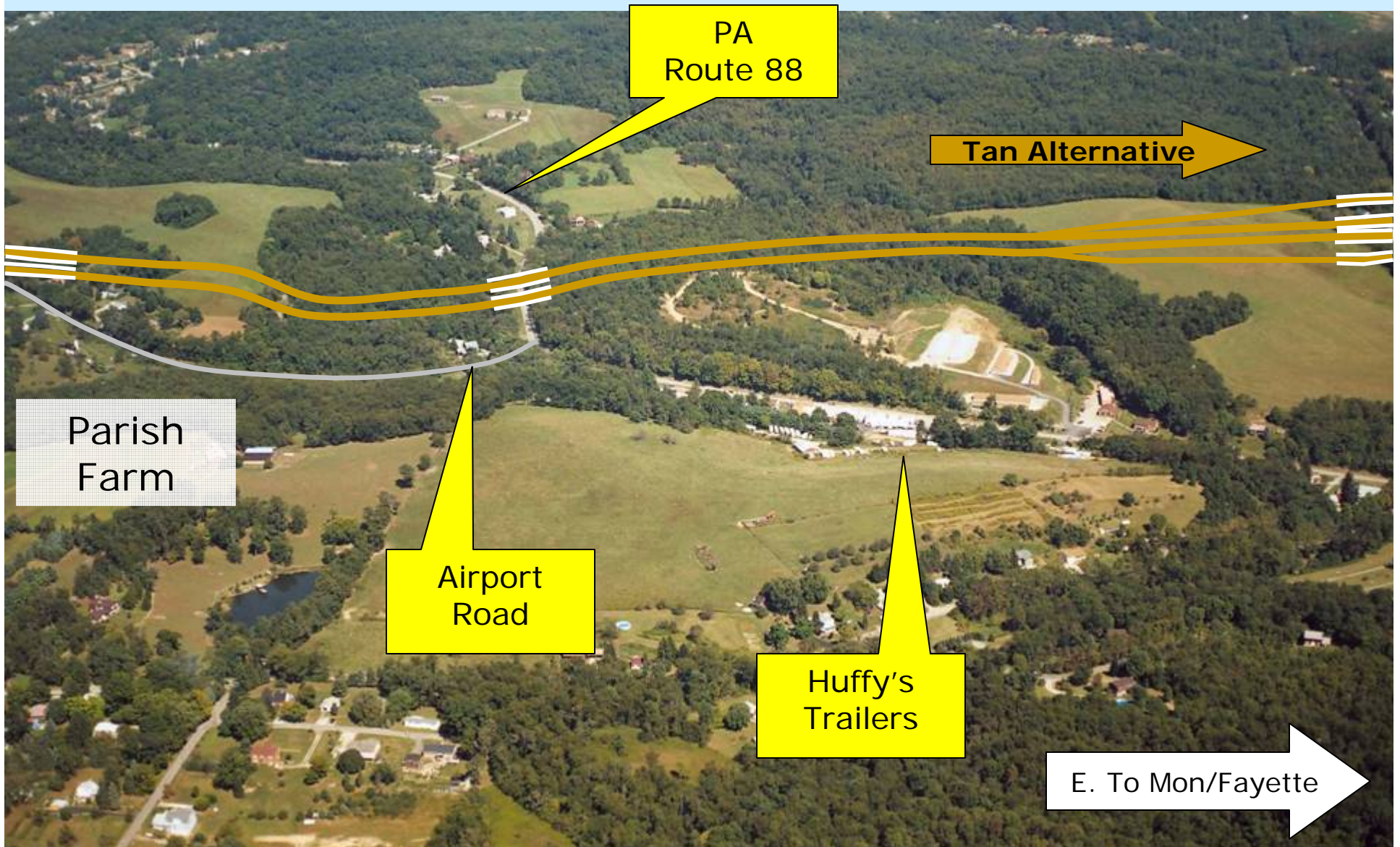


I-79 to Mon/Fayette Expressway – Tan Alternative – Section 2
The Tan Alternative would pass just north of the Parish Farm in Union Township, south of the Finleyville Airport. A portion of Airport Road would be relocated. All alternatives are on an identical alignment to the Mon/Fayette Expressway.



I-79 to Mon/Fayette Expressway – Tan Alternative – Section 2

The Tan Alternative would cross over PA Route 88 north of Airport Road in Union Township.



I-79 to Mon/Fayette Expressway – Tan Alternative – Section 2

The Tan Alternative would cross over Norfolk & Western Railroad & Patterson Road, and interchange with the Mon/Fayette Expressway in Union Township.

