

# SOUTHERN BELTWAY

## I-79 TO MON/FAYETTE EXPRESSWAY

---



### Section 1

### Tan

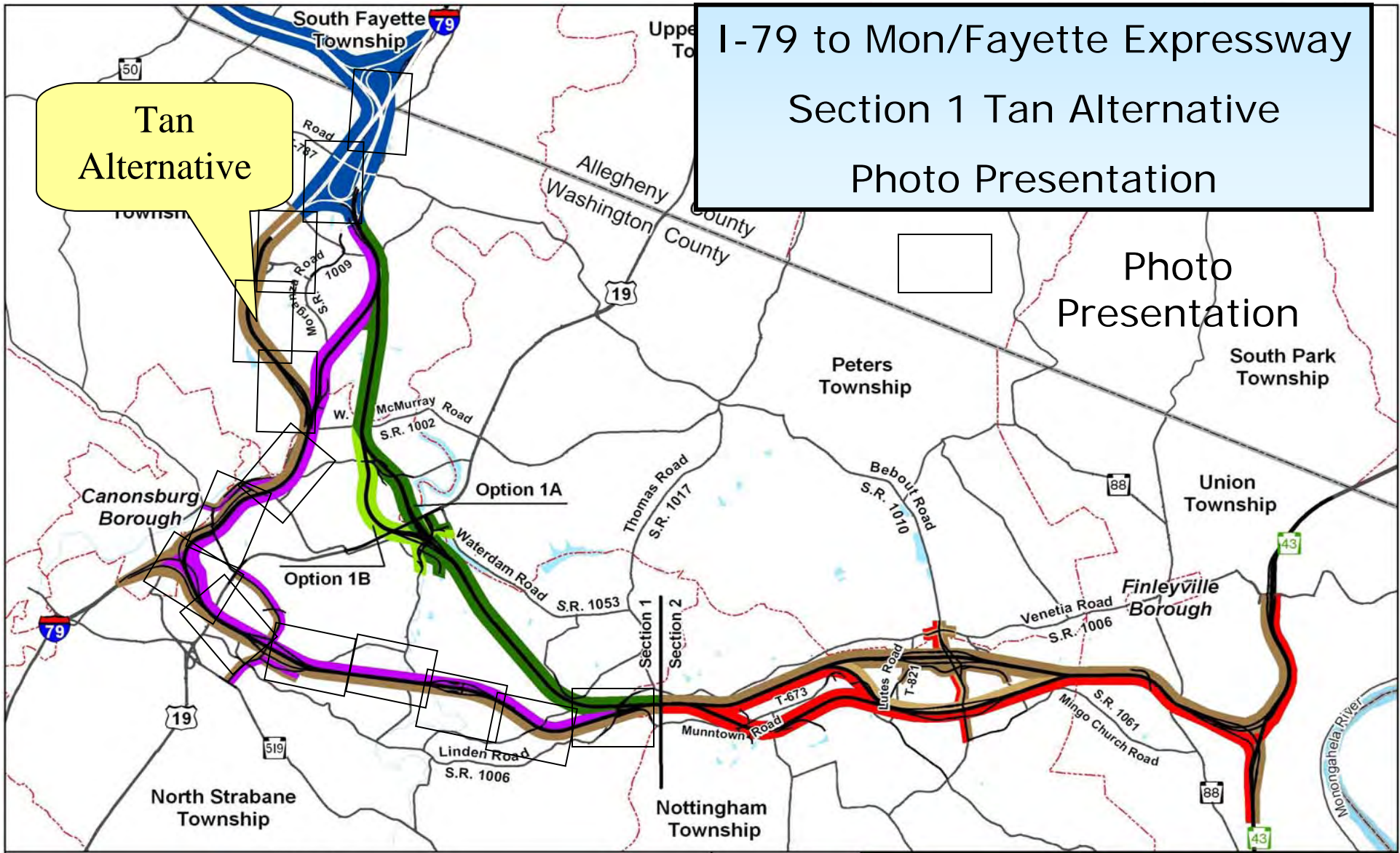
### Alternative

(Revised: January 2007)

# I-79 to Mon/Fayette Expressway Section 1 Tan Alternative Photo Presentation

Tan Alternative

Photo Presentation



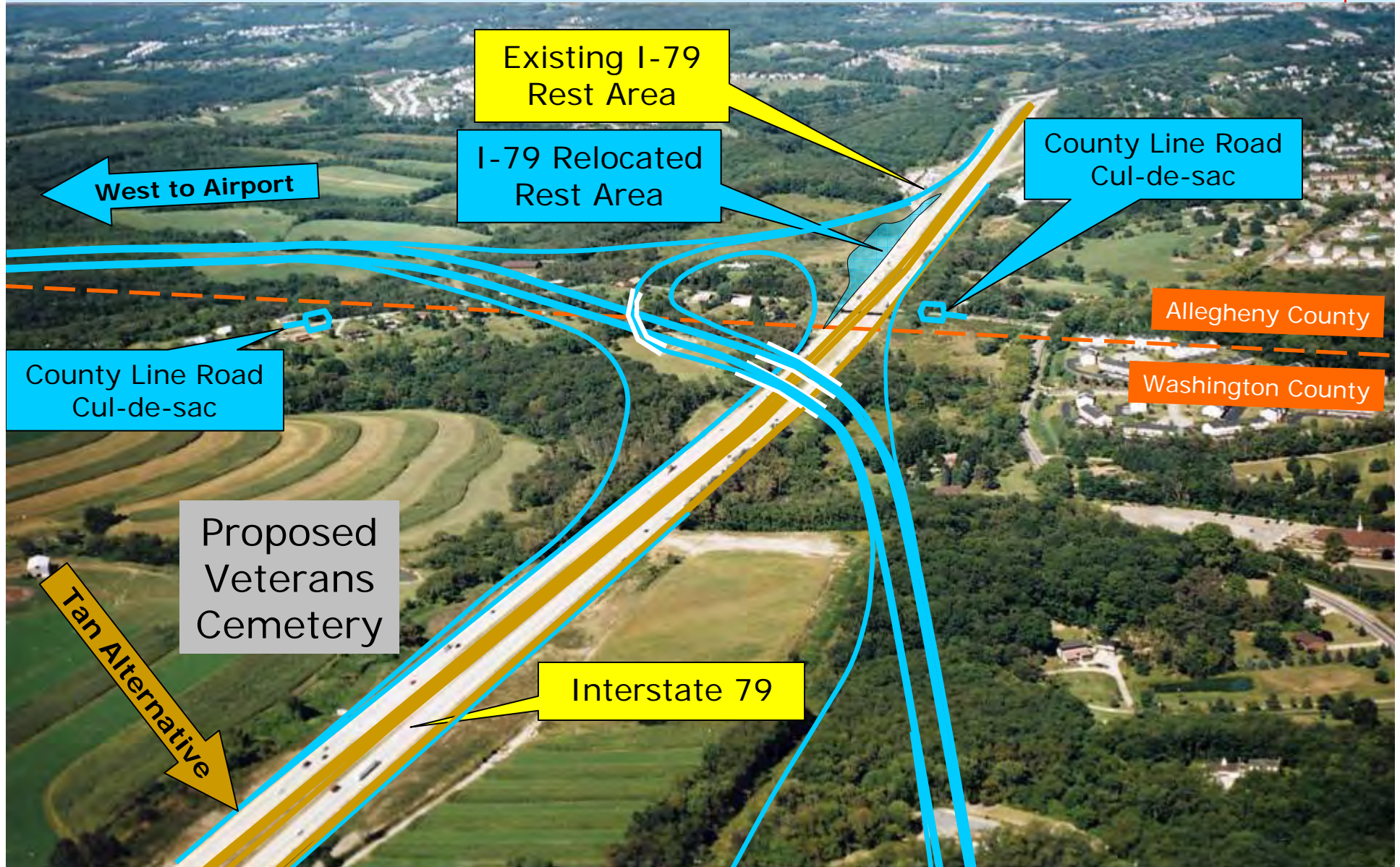
Southern Beltway US 22 to I-79 Project		Municipal Boundary	
<b>Section 1</b>		<b>Section 2</b>	
	Purple Alternative		Tan Alternative
	Tan Alternative		Red Alternative
	Green Alternative Option 1A		Tan-Red Alternative
	Green Alternative Option 1B		Open Water
			County Boundary




**Southern Beltway Transportation Project  
I-79 to Mon/Fayette Expressway  
Alternatives Advanced for Detailed Study**

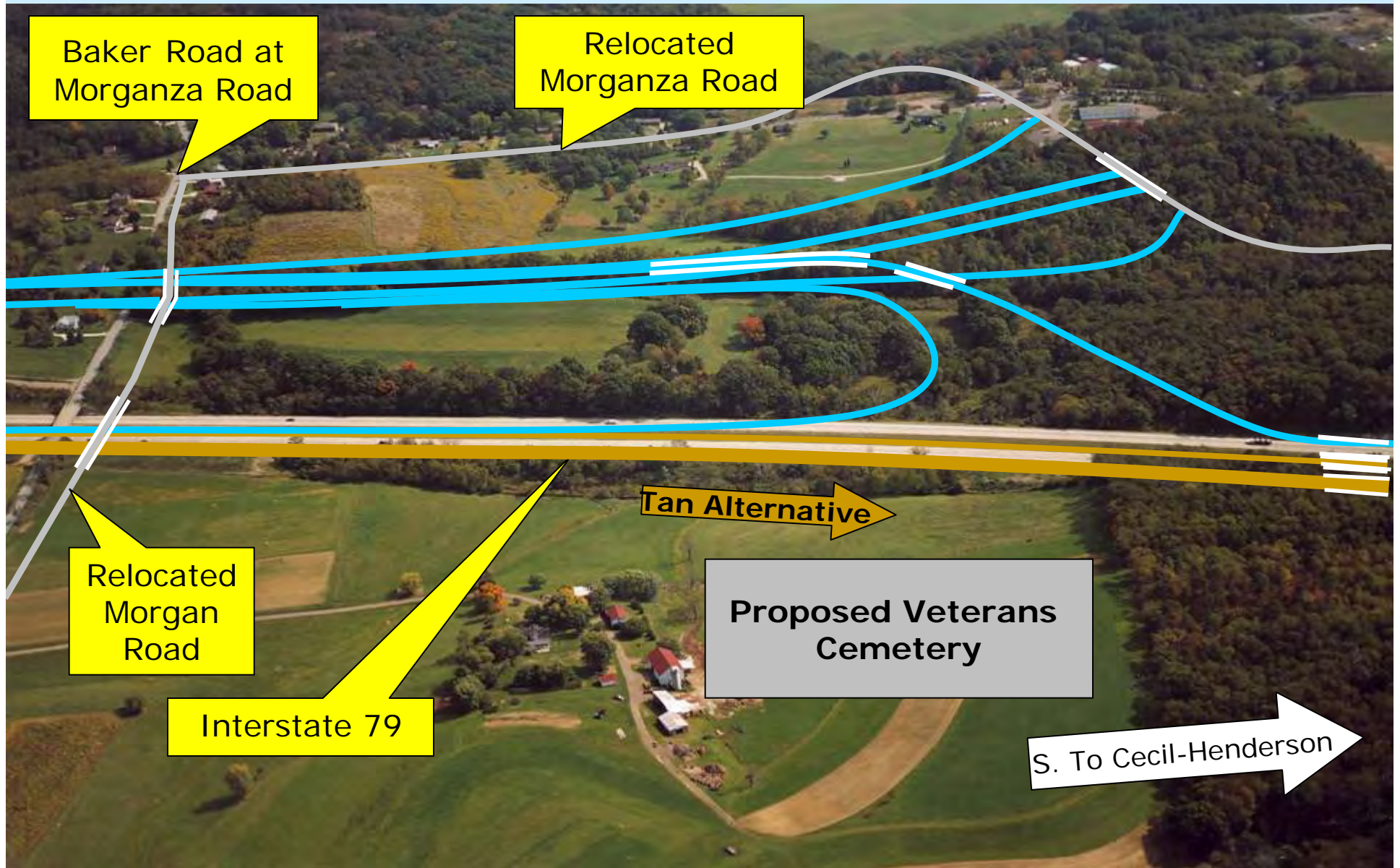
<p>Kilometers</p>	<p>Figure 1</p>
<p>Miles</p>	

I-79 to Mon/Fayette Expressway – Tan Alternative – Section 1 The Tan Alternative would interchange with Interstate 79 near County Line Road. The blue color ramps would be constructed for the U.S. 22 to I-79 Southern Beltway Project. The Tan Alternative shares the I-79 right-of-way to West McMurray road.



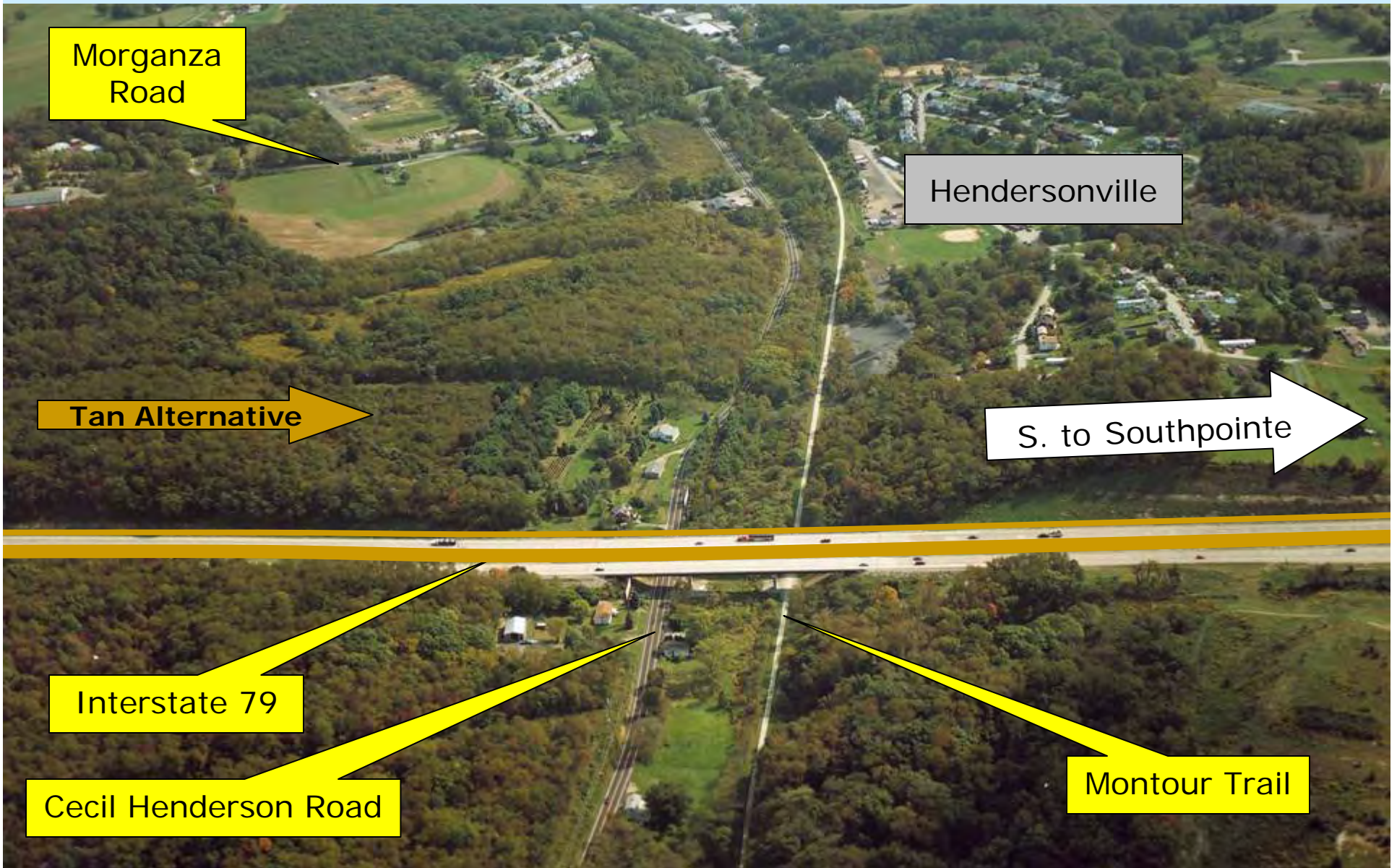
# I-79 to Mon/Fayette Expressway – Tan Alternative – Section 1

The Tan Alternative requires reconstruction of I-79 with 3 lanes added in the median and 1 lane added to the outside of the northbound lanes. The blue colored roadway/ramps would be constructed for the US 22 to I-79 Southern Beltway Project. 

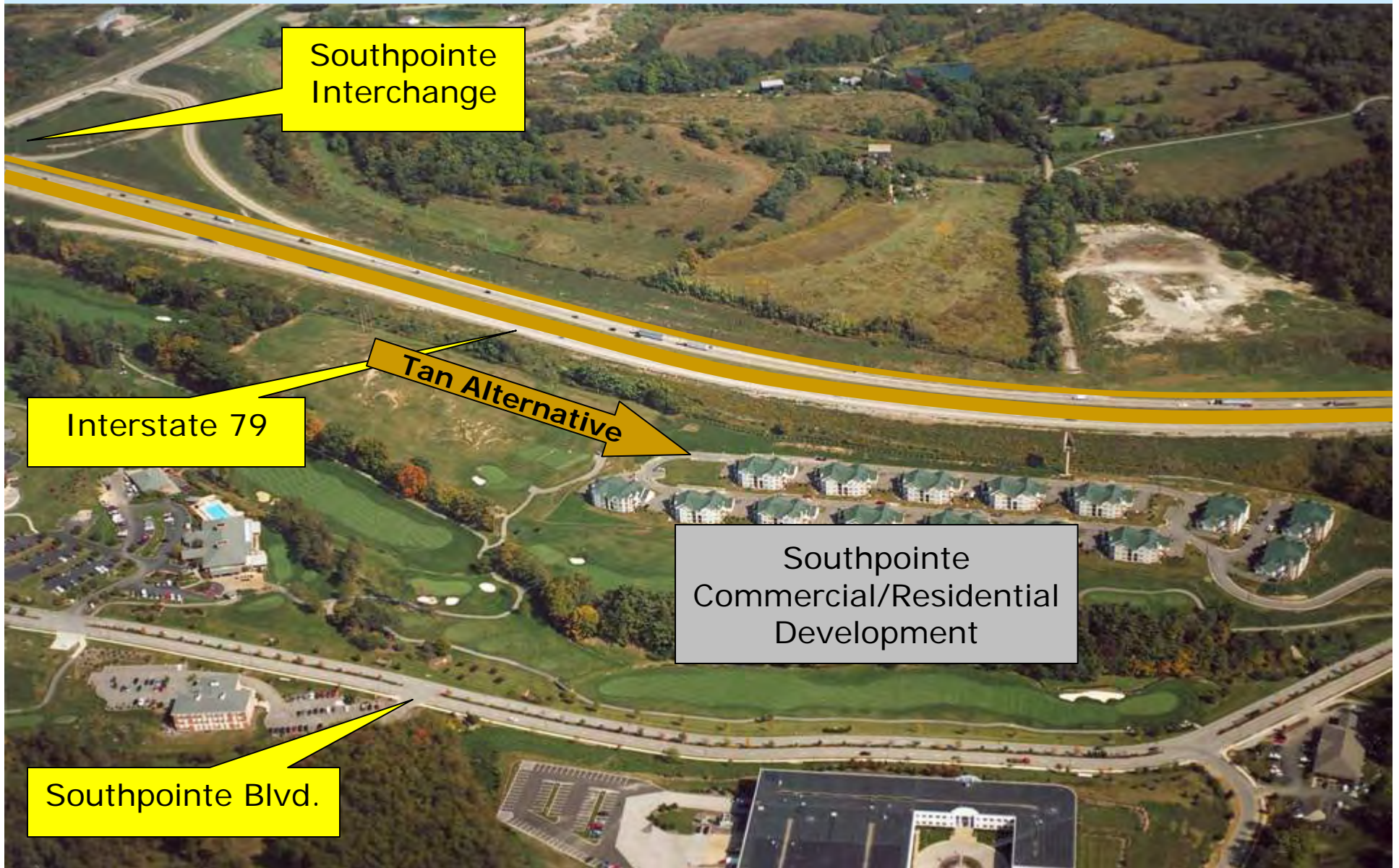


# I-79 to Mon/Fayette Expressway – Tan Alternative – Section 1

The shared-use portion of I-79 would continue, including widened structures over the Montour Trail.



I-79 to Mon/Fayette Expressway – Tan Alternative – Section 1  
The Tan Alternative would continue with three additional lanes in the I-79 median and one additional lane along the outside of the northbound lanes.



Southpointe Interchange

Interstate 79

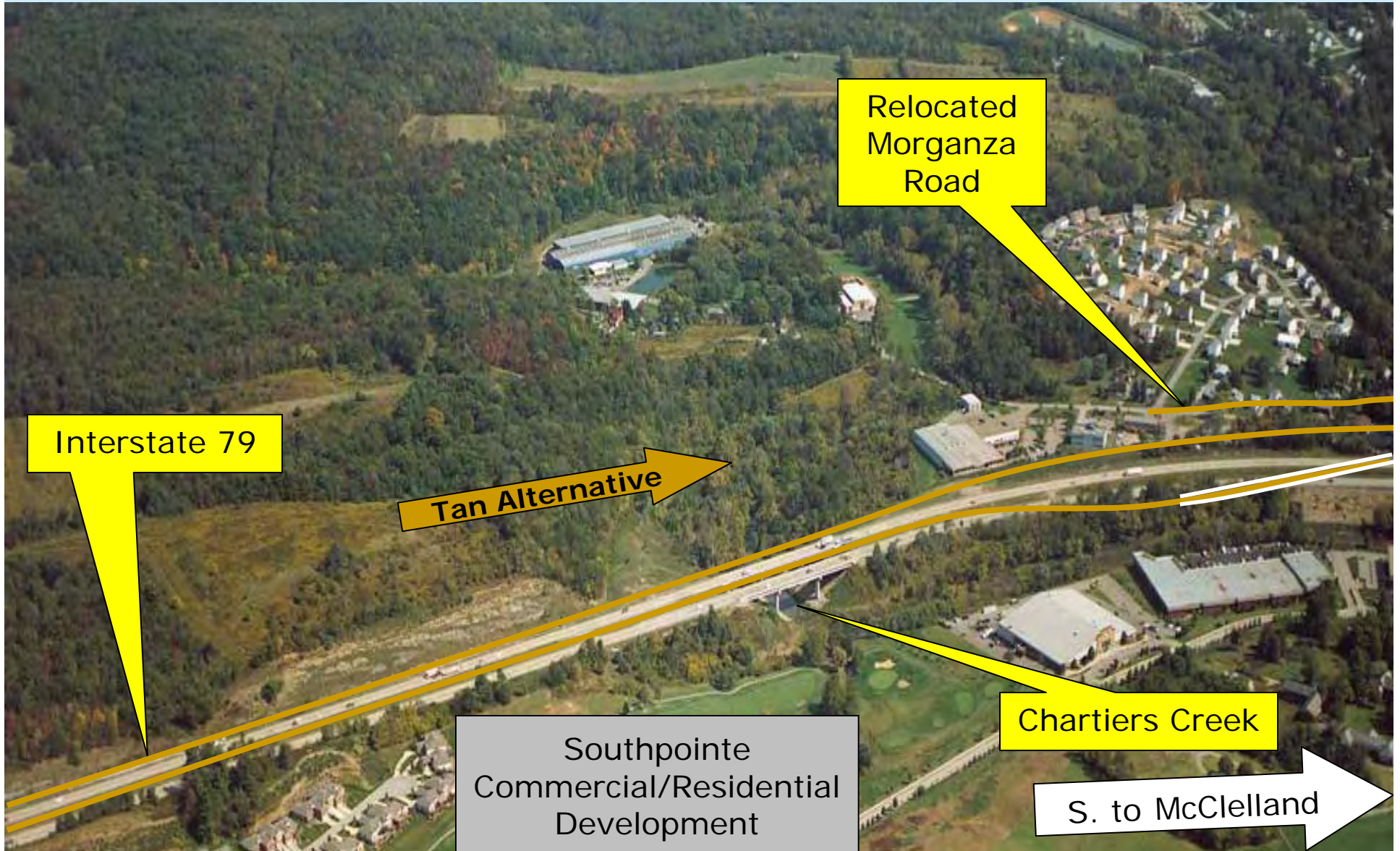
Tan Alternative

Southpointe Commercial/Residential Development

Southpointe Blvd.

# I-79 to Mon/Fayette Expressway – Tan Alternative – Section 1

As the Tan Alternative approaches West McMurray Road the two eastbound/southbound lanes in the median would cross over I-79 and then parallel I-79 to the south of Weavertown Road.



Interstate 79

Tan Alternative

Relocated Morganza Road

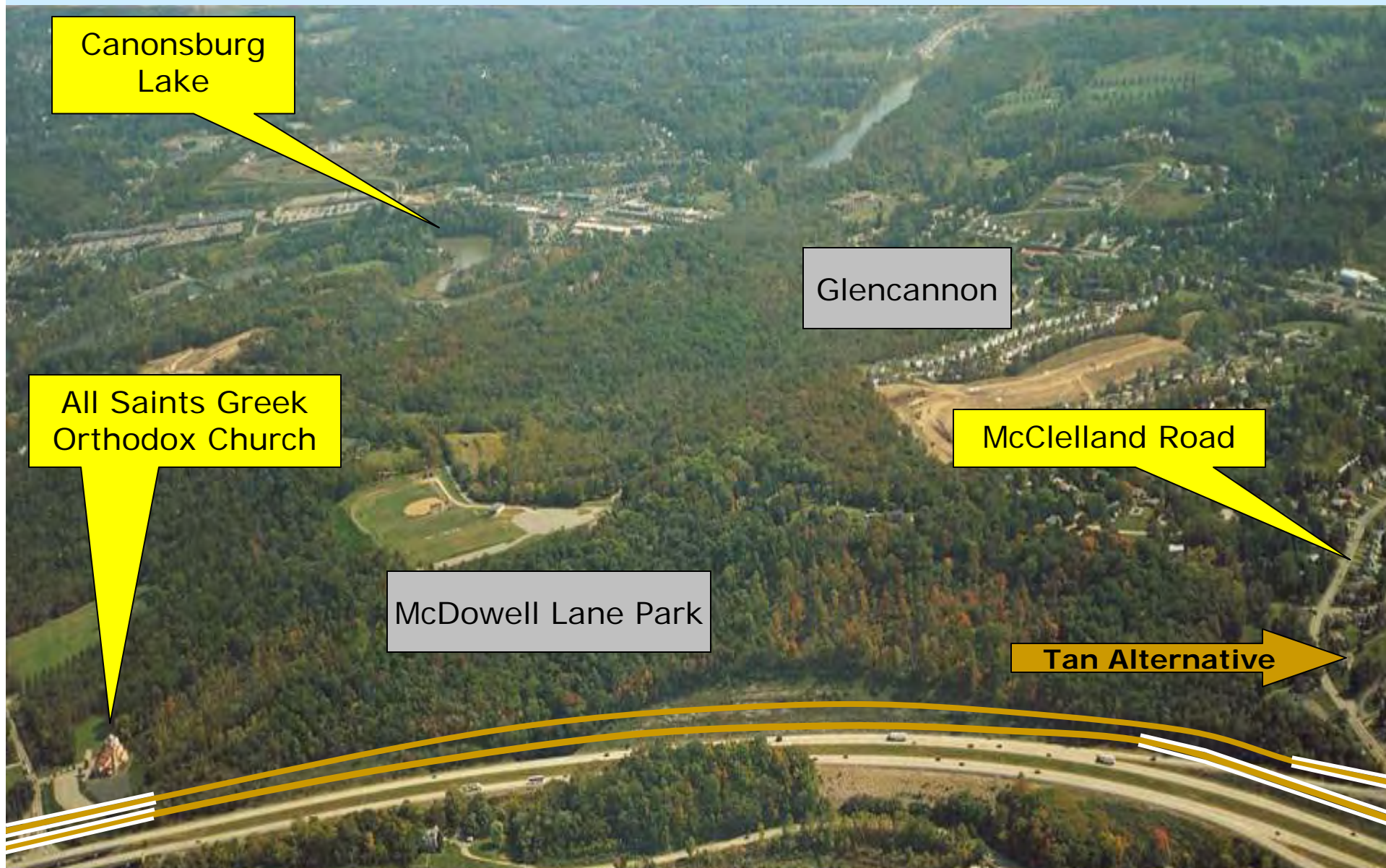
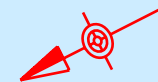
Southpointe Commercial/Residential Development

Chartiers Creek

S. to McClelland

# I-79 to Mon/Fayette Expressway – Tan Alternative – Section 1

The Tan Alternative would parallel I-79 in North Strabane Township from West McMurray Road to Weavertown Road.



Canonsburg  
Lake

Glencannon

All Saints Greek  
Orthodox Church

McClelland Road

McDowell Lane Park

Tan Alternative



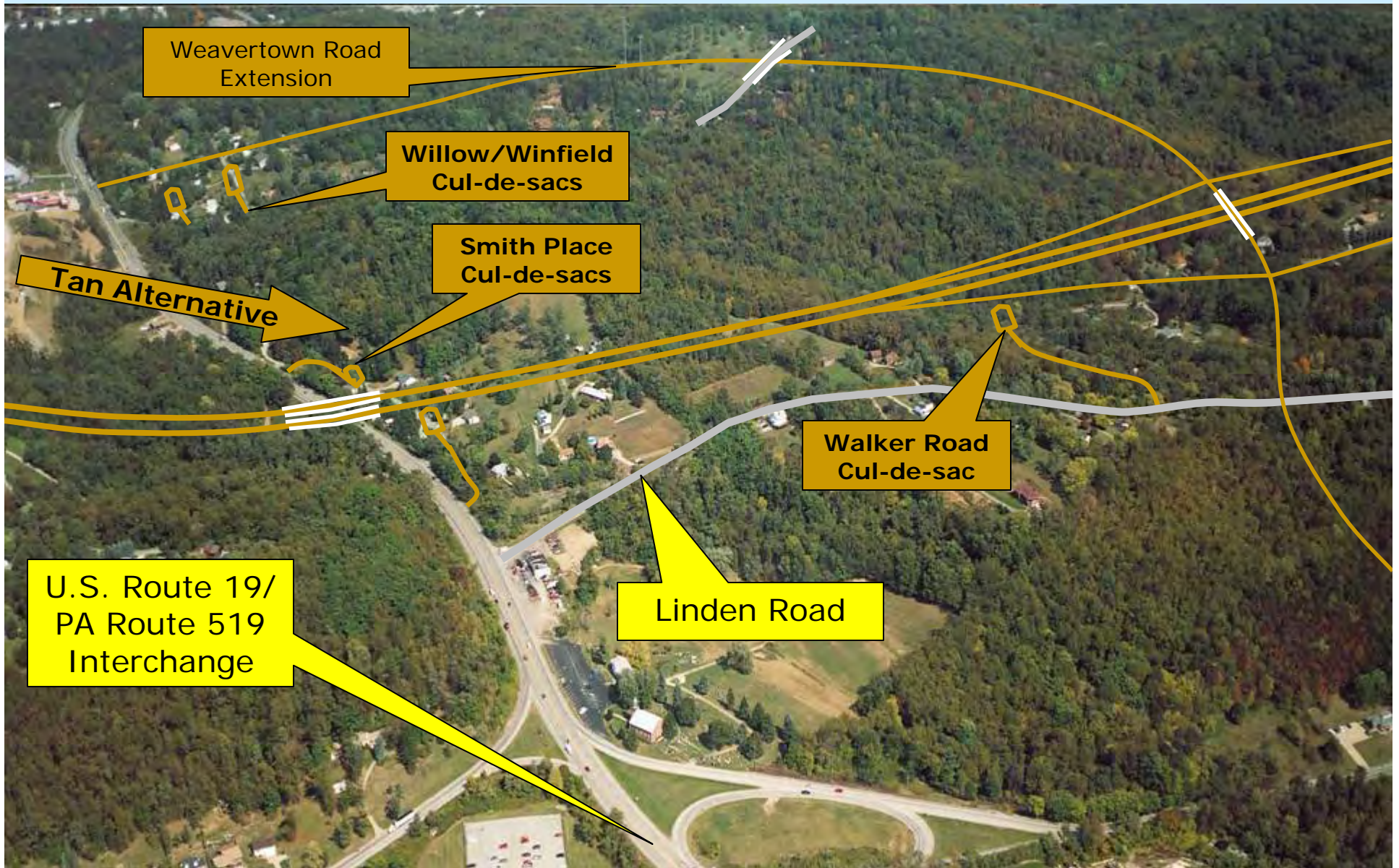
# I-79 to Mon/Fayette Expressway – Tan Alternative – Section 1

The Tan Alternative would parallel I-79 to south of Weavertown Road, and turn east to U.S. Route 19. The I-79 interchanges at McClelland and Weavertown Roads would be modified and ramps to I-79 South would be constructed.



# I-79 to Mon/Fayette Expressway – Tan Alternative – Section 1

The Tan Alternative would cross over U.S. Route 19 north of Linden Road. An interchange would be constructed east of U.S. Route 19 with connector roads to serve the U.S. Route 19 and PA Route 519 corridors. Walker Road would be cul-de-saced.



# I-79 to Mon/Fayette Expressway – Tan Alternative – Section 1

Computer rendering of interchange for the Tan Alternative east of Route 19 providing access to U.S. Route 19 and PA Route 519.



# I-79 to Mon/Fayette Expressway – Tan Alternative – Section 1

The Tan Alternative would travel east from U.S. Route 19, north of Linden Road, spanning Over Linden Creek Road.



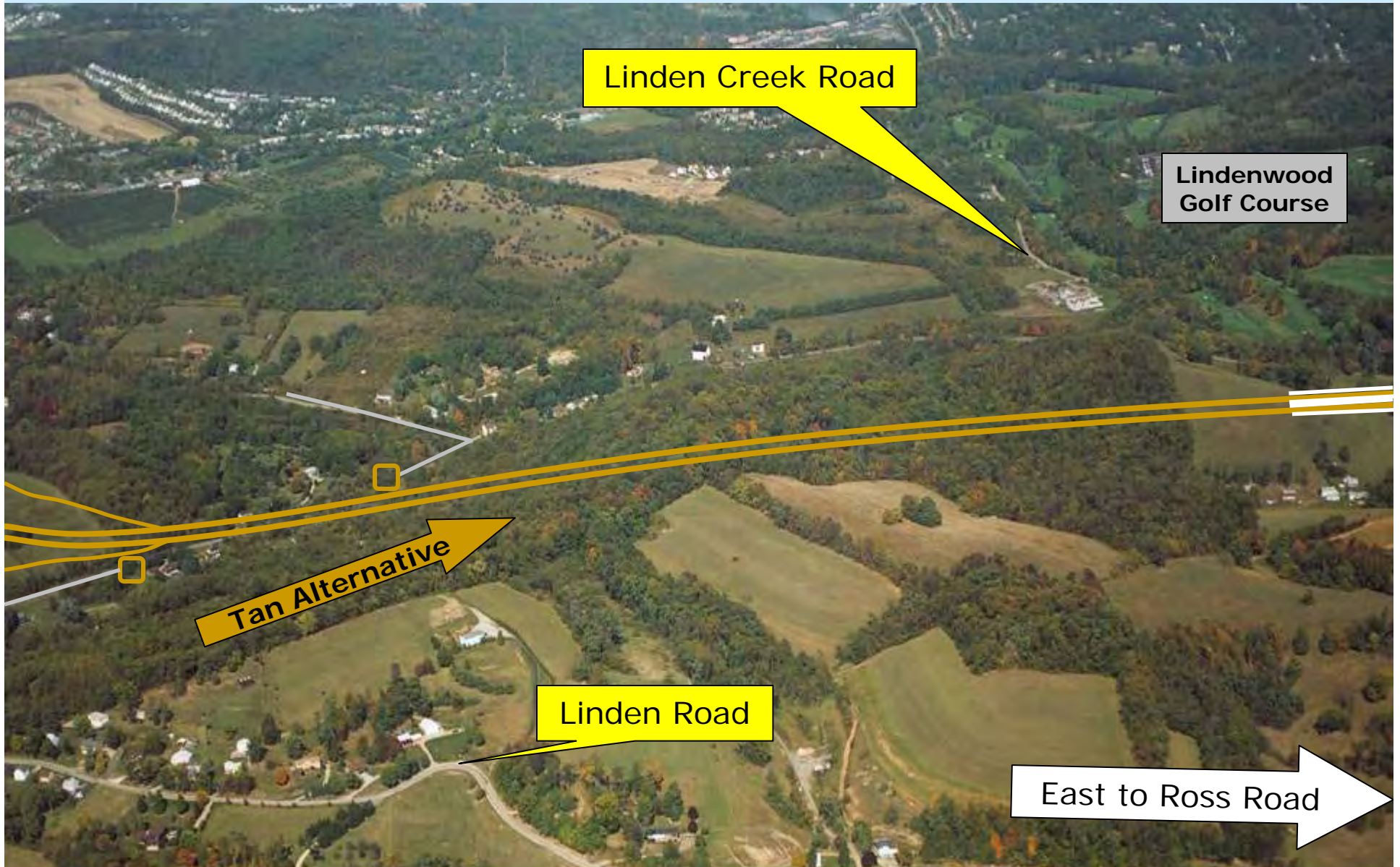
Linden Creek Road

Lindenwood  
Golf Course

Tan Alternative

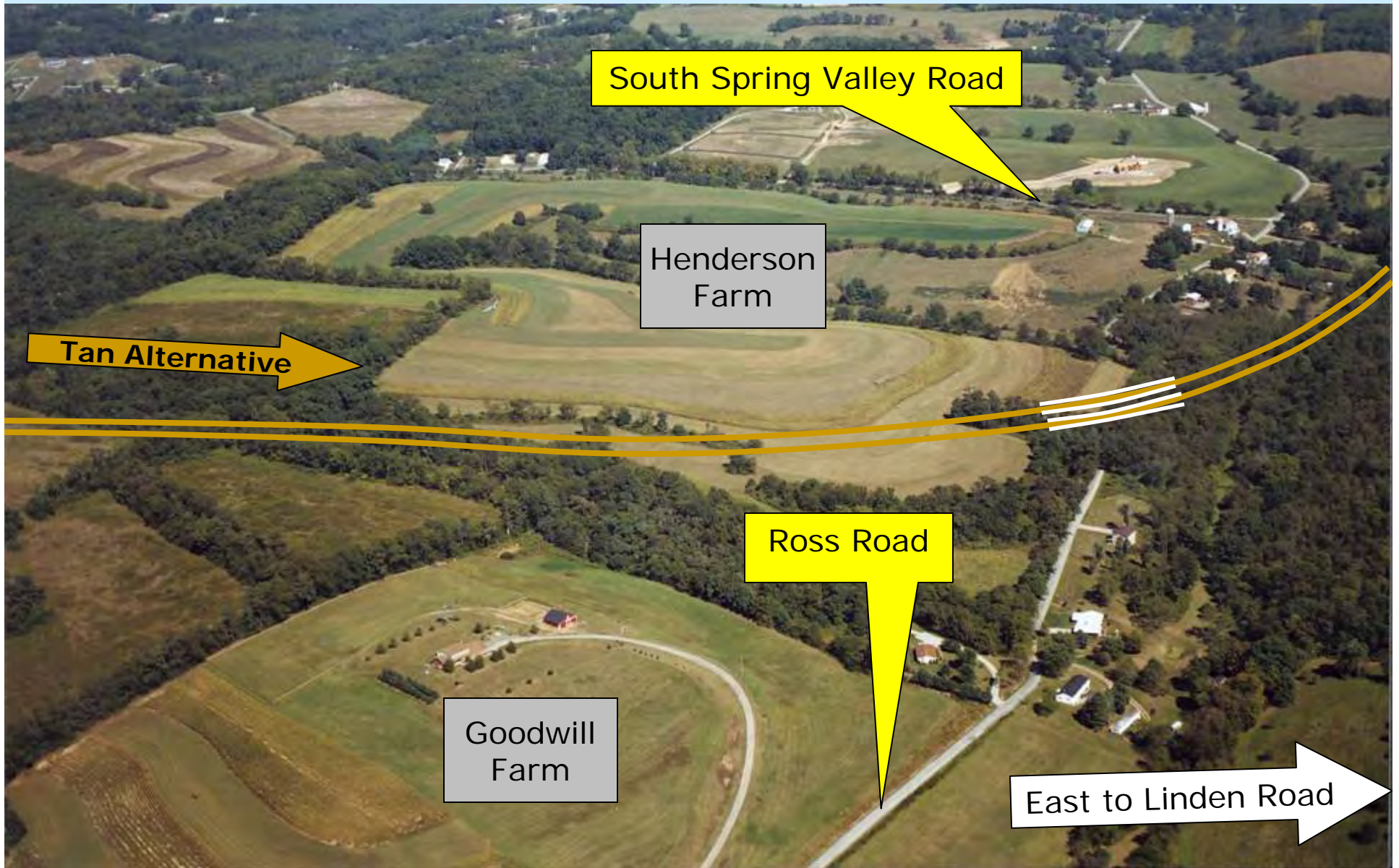
Linden Road

East to Ross Road



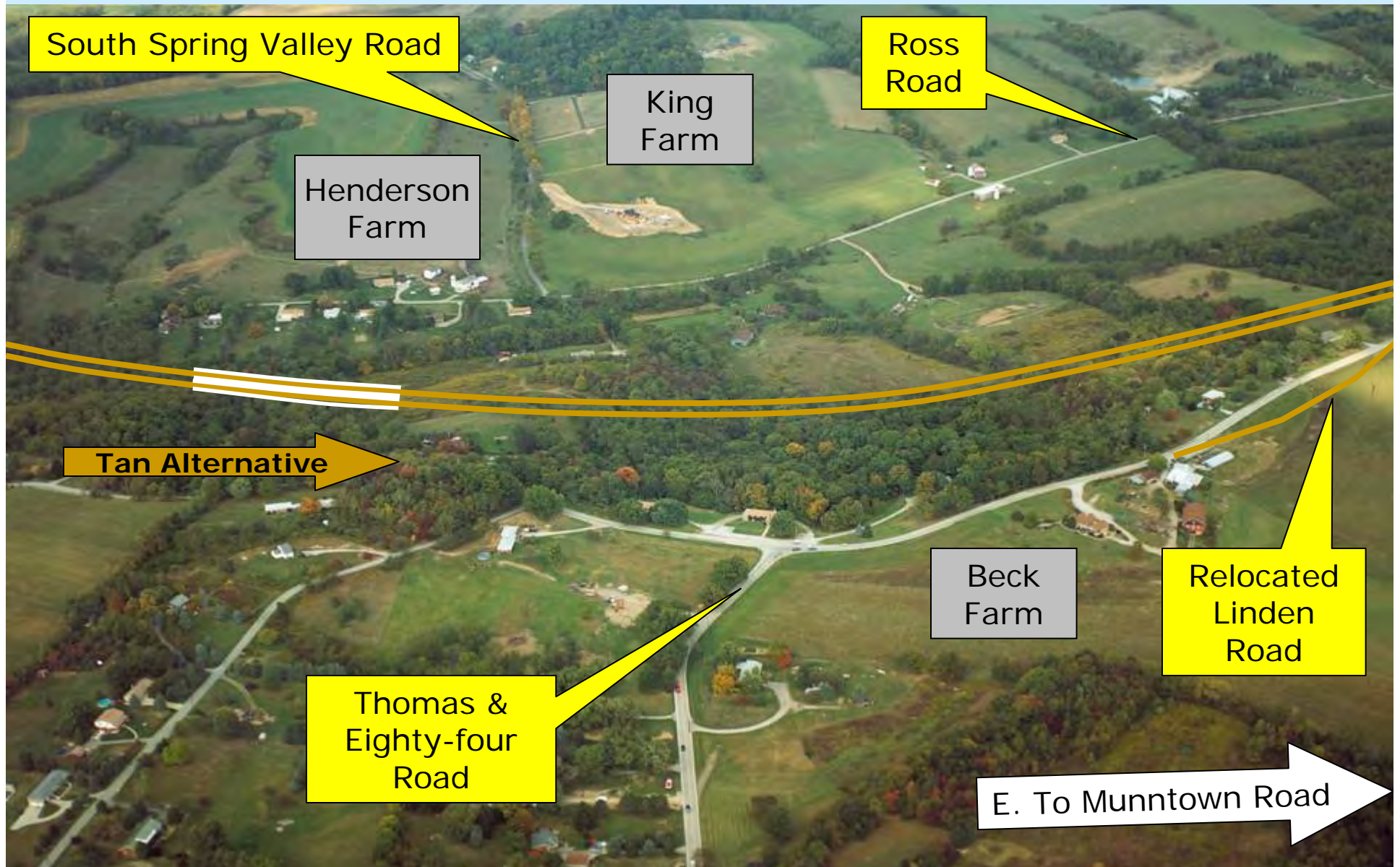
# I-79 to Mon/Fayette Expressway – Tan Alternative – Section 1

The Tan Alternative would cross through the southwest corner of the Henderson Farm and would span Ross Road.



# I-79 to Mon/Fayette Expressway – Tan Alternative – Section 1

The Tan Alternative would span over Ross Road west of South Spring Valley Road and then cross under Linden Road, east of Beck's Farm.



South Spring Valley Road

Henderson Farm

King Farm

Ross Road

Tan Alternative

Thomas & Eighty-four Road

Beck Farm

Relocated Linden Road

E. To Munntown Road

I-79 to Mon/Fayette Expressway – Tan Alternative – Section 1  
The Tan Alternative would cross Munntown Road, near the intersection of Linden Road, near Thomas, and would meet the Section 2 Alternatives near the CSX Tunnel. Munntown Road would be realigned to intersect with Linden Road.

