

SOUTHERN BELTWAY

I-79 TO MON/FAYETTE EXPRESSWAY

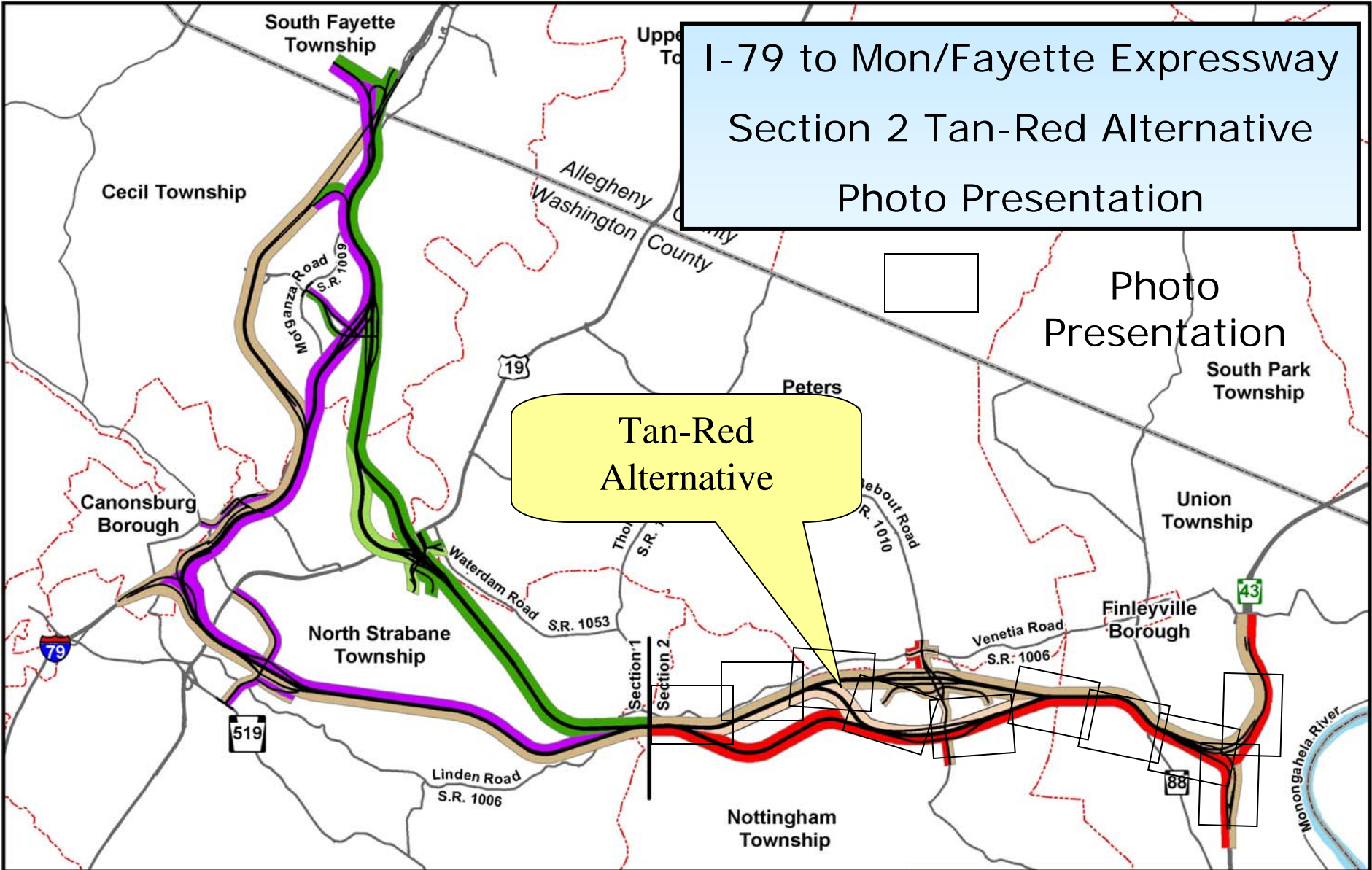


Section 2

Tan-Red Alternative

(Revised: June 2005)

I-79 to Mon/Fayette Expressway
 Section 2 Tan-Red Alternative
 Photo Presentation



Section 1		Section 2			
	Green Alternative Option 1A		Tan Alternative		Municipal Boundary
	Green Alternative Option 1B		Red Alternative		County Boundary
	Purple Alternative		Tan-Red Alternative		
	Tan Alternative				



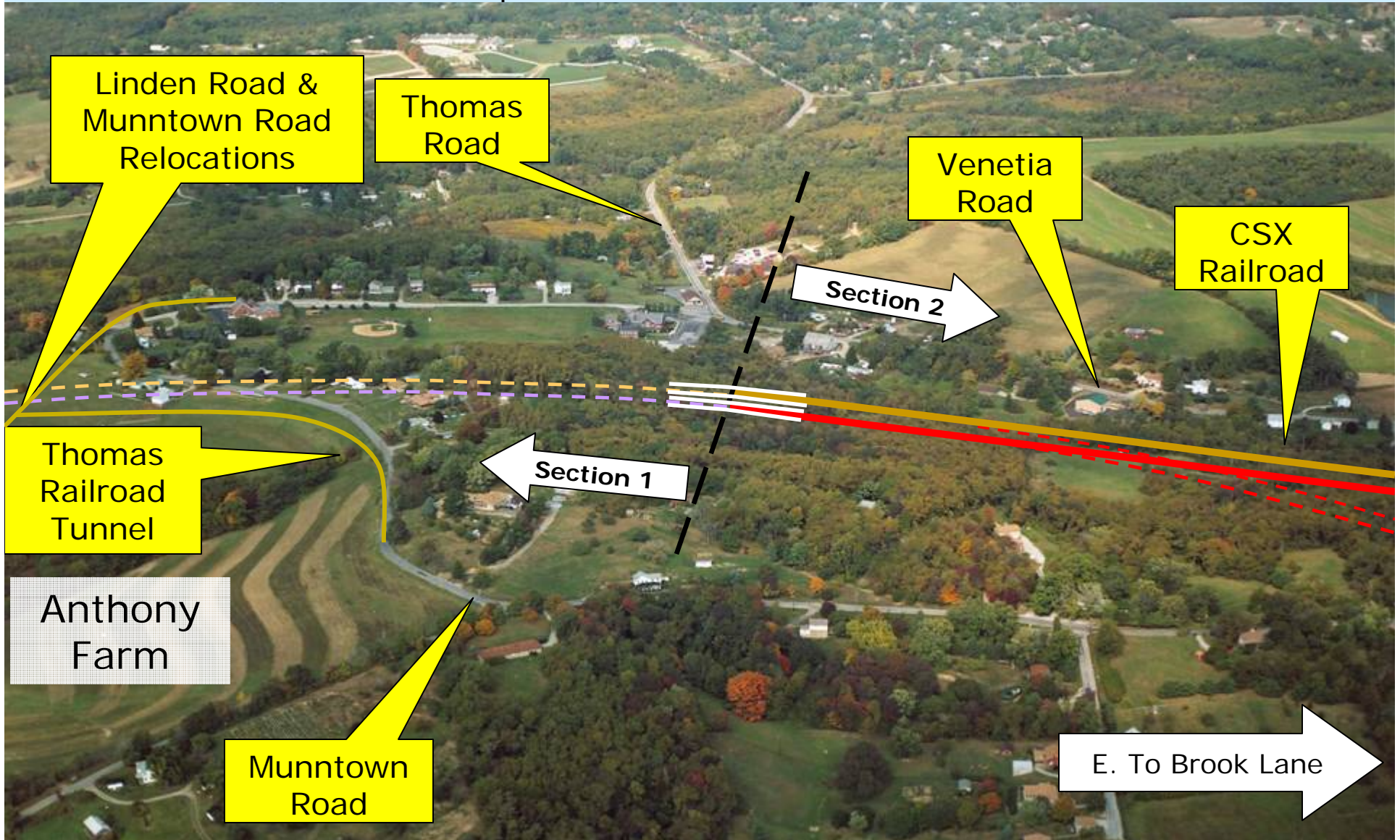
Southern Beltway Transportation Project
I-79 to Mon/Fayette Expressway
Alternatives Advanced for Detailed Study

0 1 2 3 Kilometers
 0 1 2 3 Miles

Figure 1

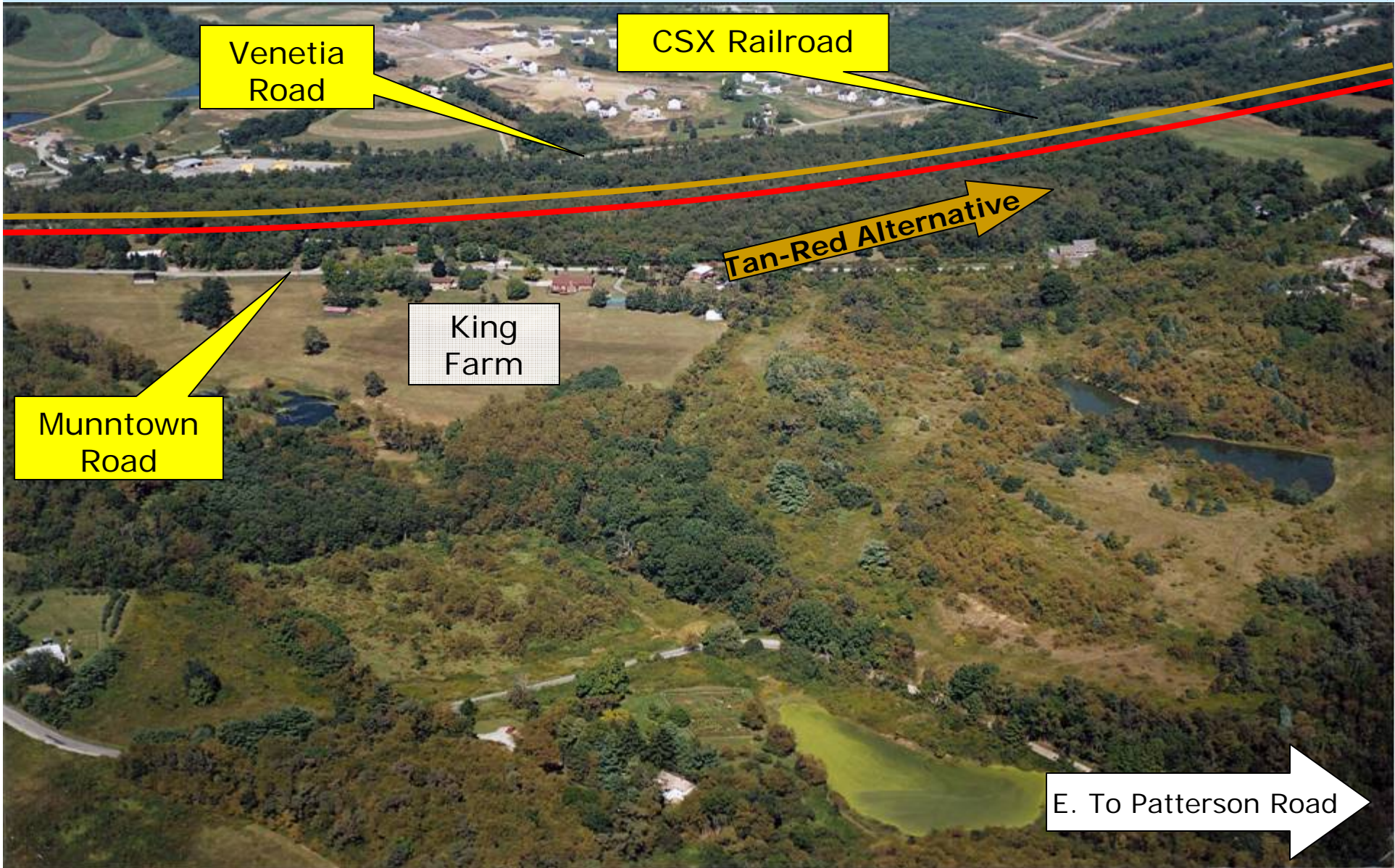
I-79 to Mon/Fayette Expressway – Tan-Red Alternative – Section 2

Section 1 / Section 2 would meet near Linden Road at Munntown Road. The Tan-Red Alternative in Section 2 would be located south of CSX Railroad. The Tan-Red Alternative is a combination of the western portion of the Tan Alternative and the eastern portion of the Red Alternative.



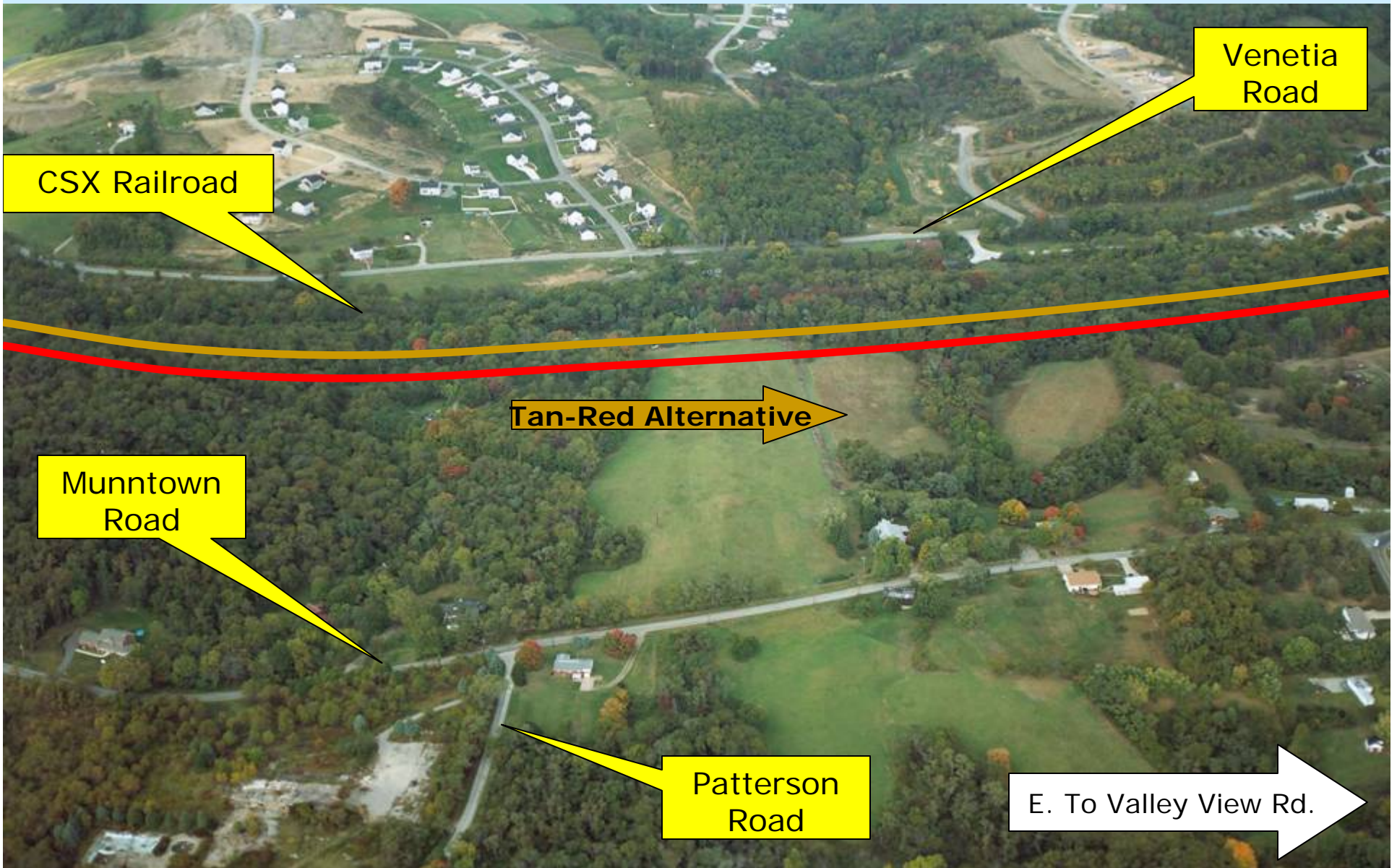
I-79 to Mon/Fayette Expressway – Tan-Red Alternative – Section 2

The Tan-Red Alternative would run between the CSX Railroad and Munntown Road in the western portions of Nottingham Township.



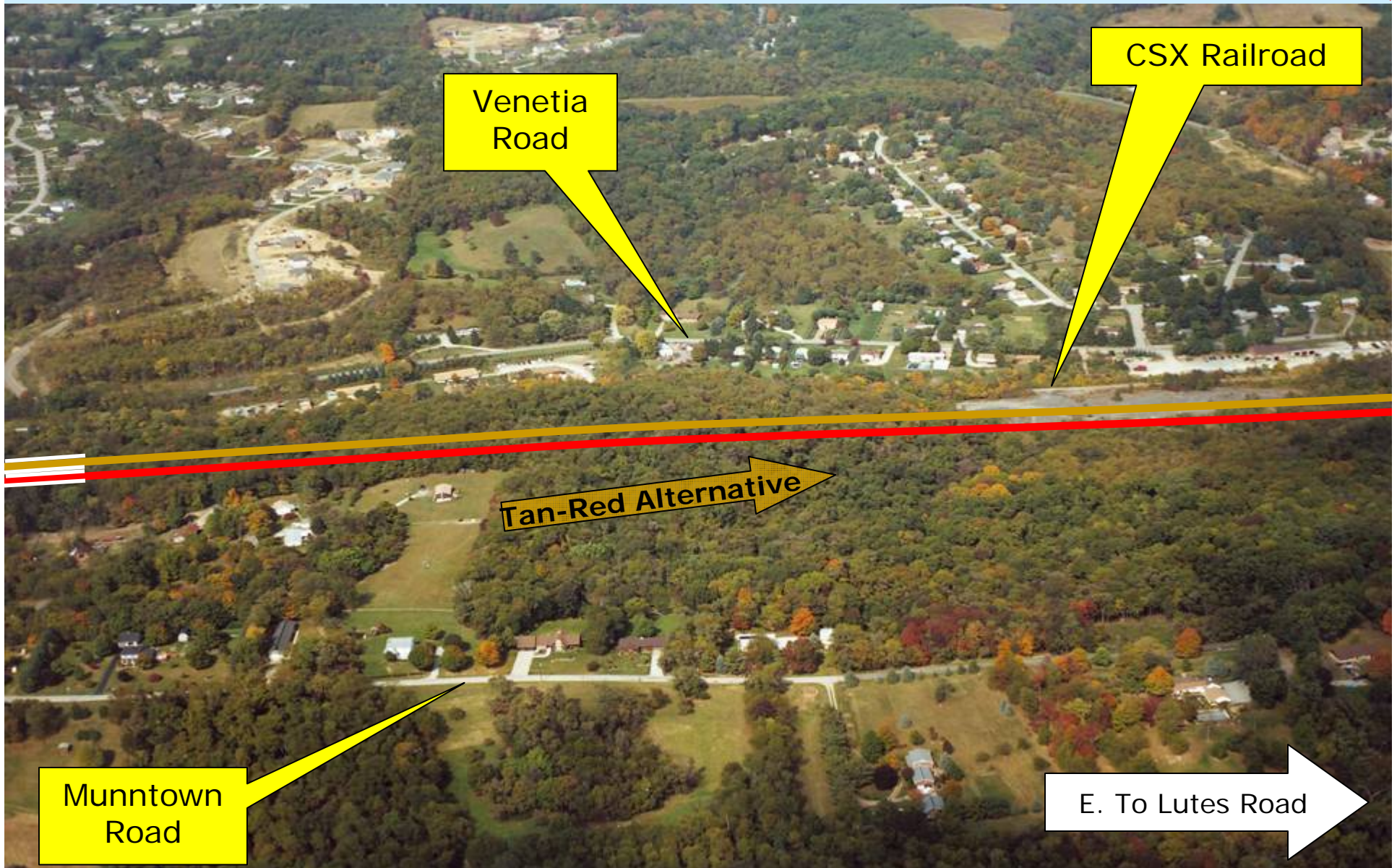
I-79 to Mon/Fayette Expressway – Tan-Red Alternative – Section 2

The Tan-Red Alternative would continue running south of the CSX Railroad in Nottingham Township, passing through mostly wooded lands.



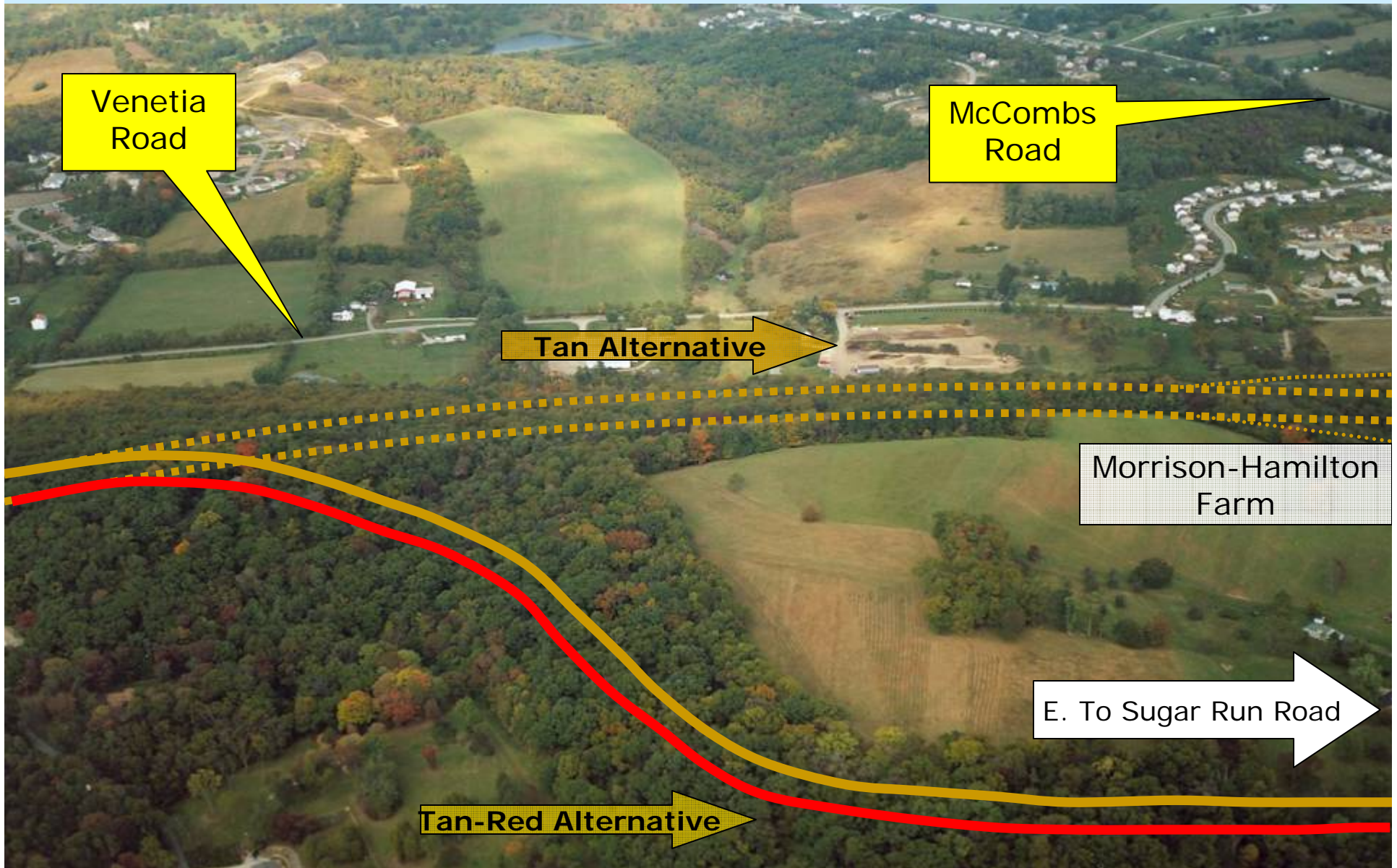
I-79 to Mon/Fayette Expressway – Tan-Red Alternative – Section 2

The Tan-Red Alternative would run between the CSX Railroad and Munntown Road in Nottingham Township.



I-79 to Mon/Fayette Expressway – Tan-Red Alternative – Section 2

The Tan-Red Alternative would diverge to the south from the Tan Alternative west of Lutes Road to avoid the Morrison-Hamilton Farm.



Venetia Road

McCombs Road

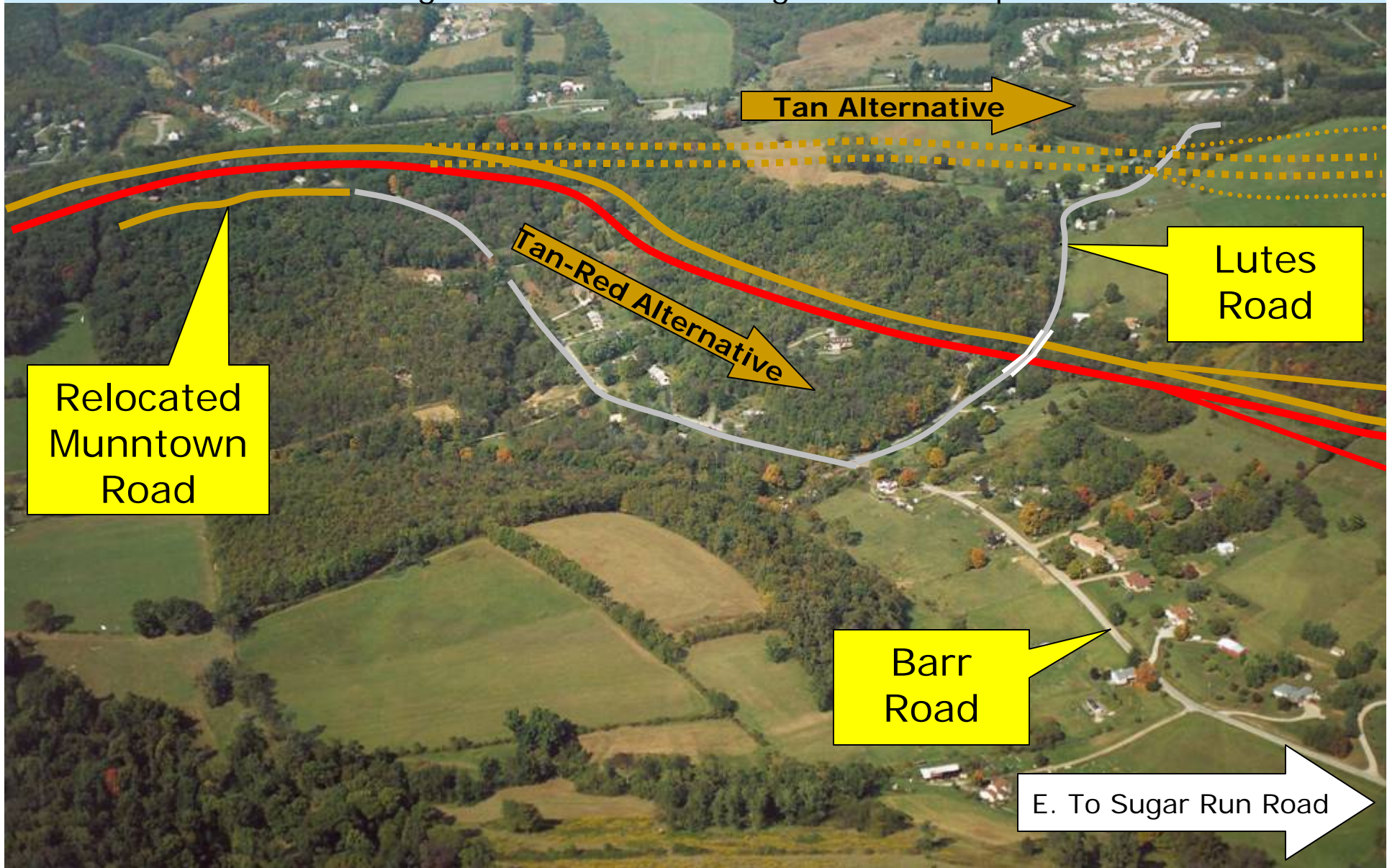
Tan Alternative

Morrison-Hamilton Farm

E. To Sugar Run Road

Tan-Red Alternative

I-79 to Mon/Fayette Expressway – Tan-Red Alternative – Section 2
The Tan-Red Alternative would pass south of the Morrison-Hamilton Farm on Lutes Road. Lutes Road would cross over the mainline west of the proposed interchange on Sugar Run Road in Nottingham Township.



I-79 to Mon/Fayette Expressway – Tan-Red Alternative – Section 2
The Tan-Red Alternative would interchange with Sugar Run Road in Nottingham Township. Sugar Run Road would be relocated to meet with Bebout Road.

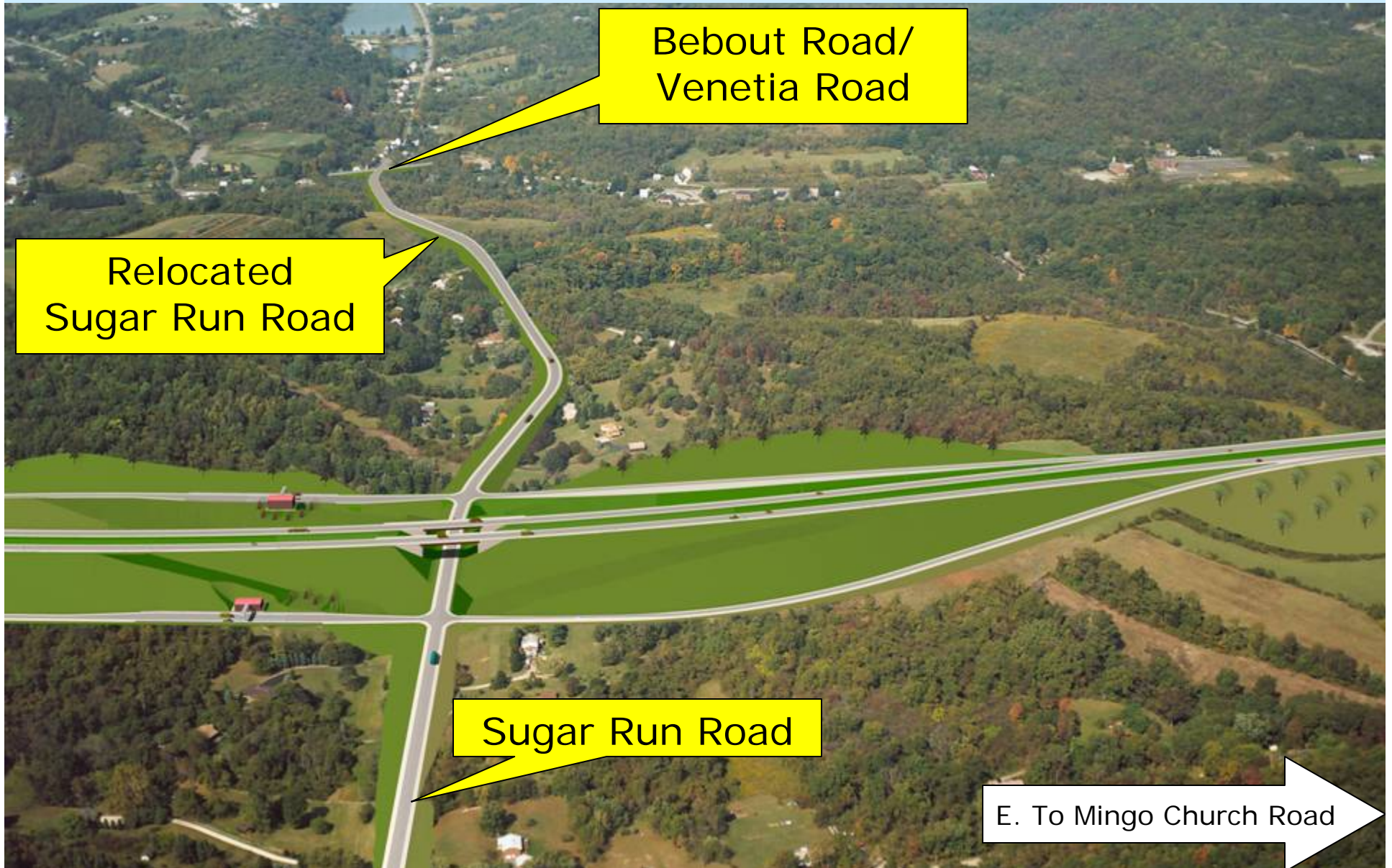


Bebout Road/
Venetia Road

Relocated
Sugar Run Road

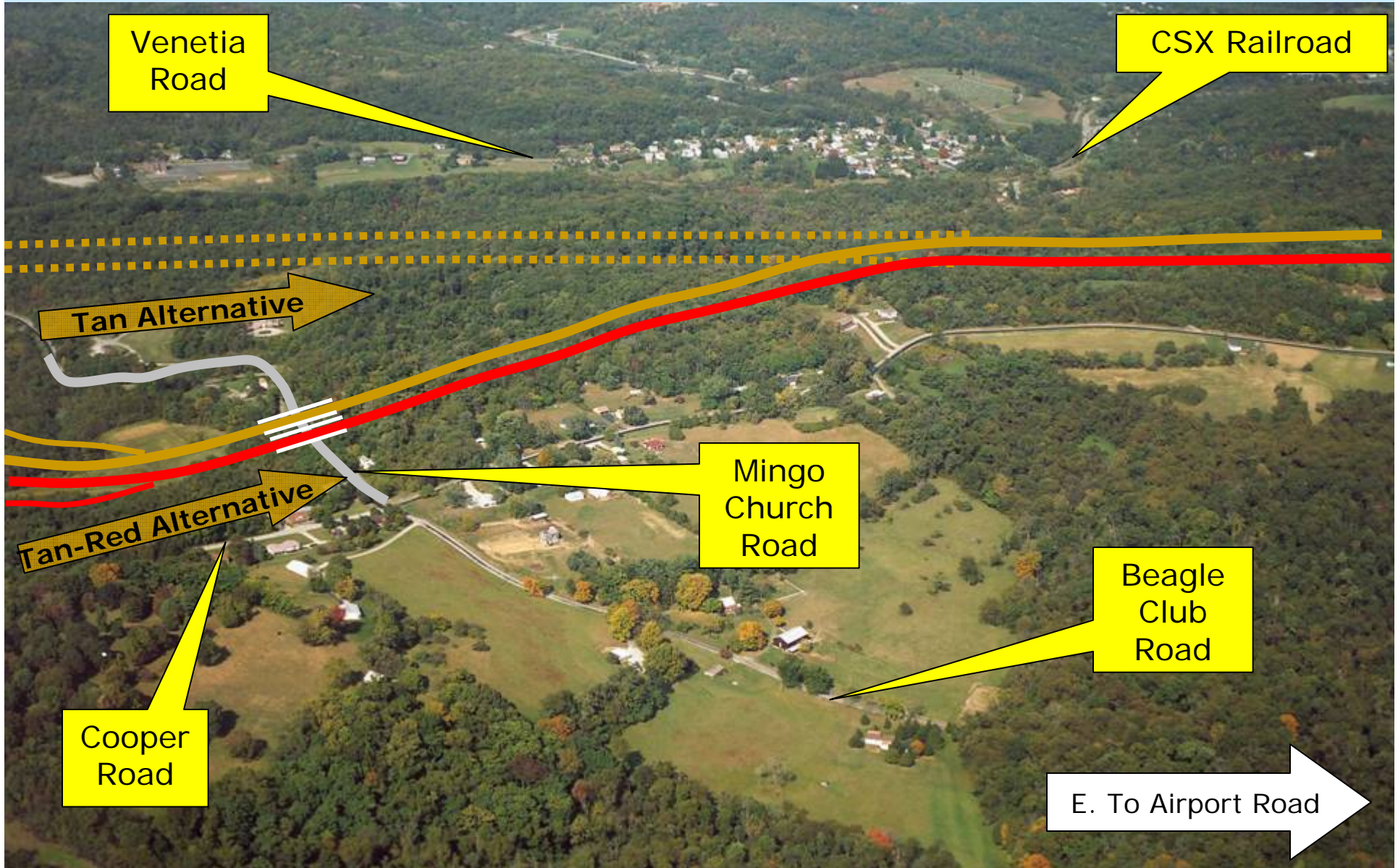
Sugar Run Road

E. To Mingo Church Road



I-79 to Mon/Fayette Expressway – Tan-Red Alternative – Section 2

The Tan-Red Alternative would begin to shift towards the southeast to avoid residential areas and the Finleyville Airport. The Tan-Red Alternative would meet the Tan Alternative near the slag stockpile area north of Mingo Church Road.



Venetia Road

CSX Railroad

Tan Alternative

Mingo Church Road

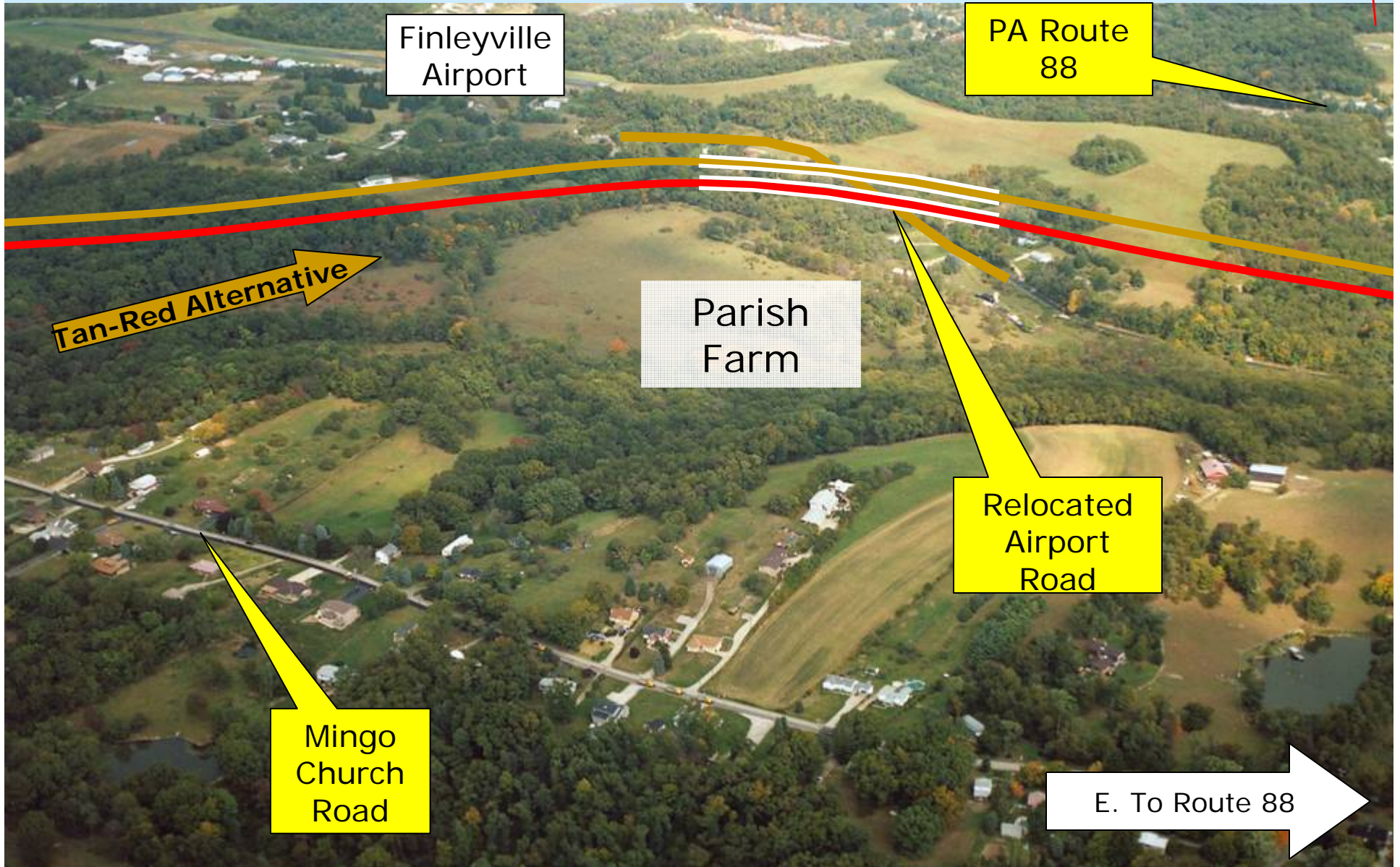
Tan-Red Alternative

Beagle Club Road

Cooper Road

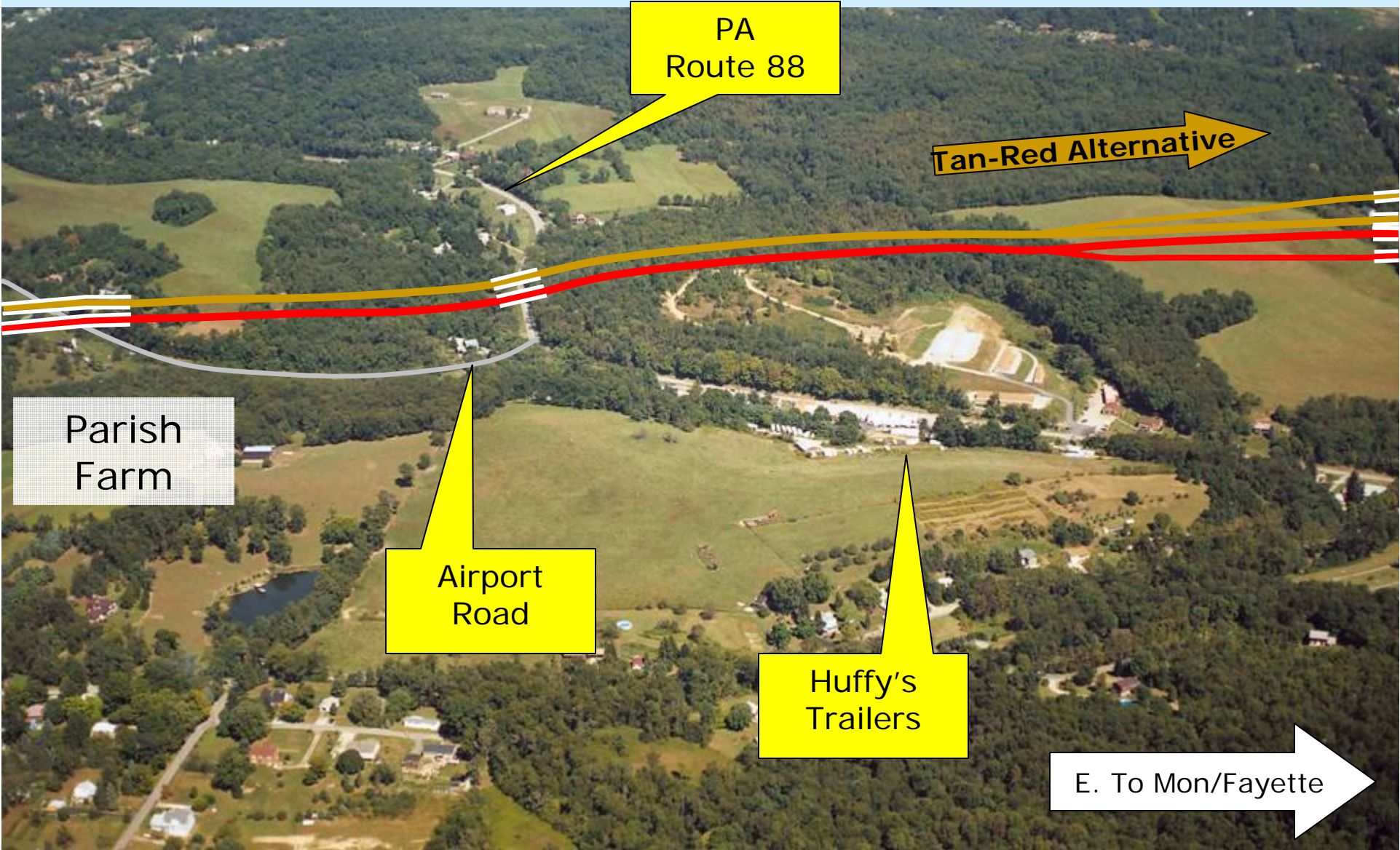
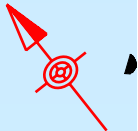
E. To Airport Road

I-79 to Mon/Fayette Expressway – Tan-Red Alternative – Section 2
The Tan-Red Alternative would pass just north of the Parish Farm in Union Township, south of the Finleyville Airport. A portion of Airport Road would be relocated. All Alternatives are on an identical alignment to the Mon/Fayette Expressway.



I-79 to Mon/Fayette Expressway – Tan-Red Alternative – Section 2

The Tan-Red Alternative would cross over PA Route 88 north of Airport Road in Union Township.



PA
Route 88

Tan-Red Alternative

Parish
Farm

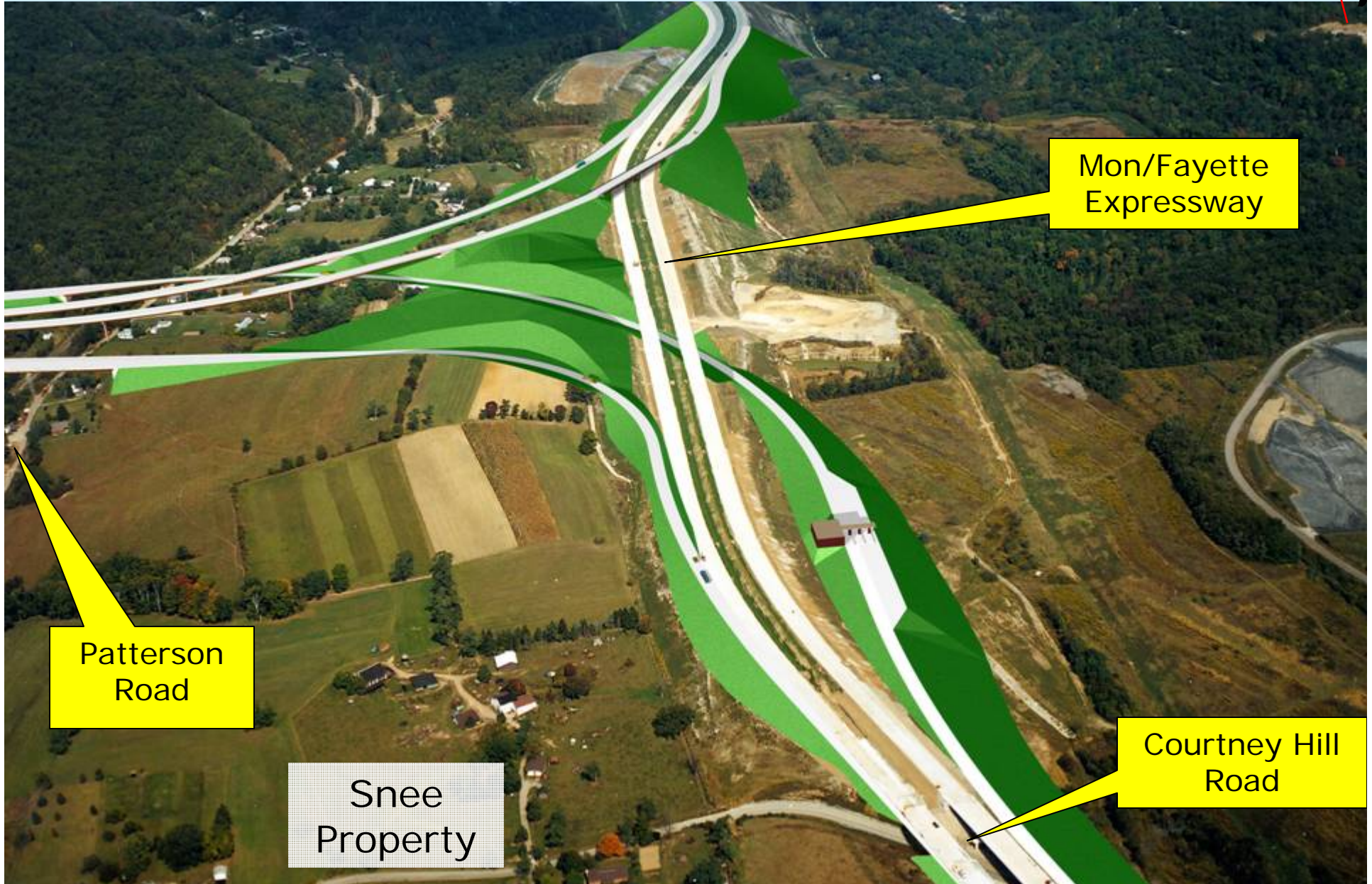
Airport
Road

Huffy's
Trailers

E. To Mon/Fayette

I-79 to Mon/Fayette Expressway – Tan-Red Alternative – Section 2

The Tan-Red Alternative would cross over Norfolk & Western Railroad & Patterson Road, and interchange with the Mon/Fayette Expressway in Union Township.



Mon/Fayette Expressway

Patterson Road

Snee Property

Courtney Hill Road