

SOUTHERN BELTWAY

I-79 TO MON/FAYETTE EXPRESSWAY



Section 1

Green Alternative

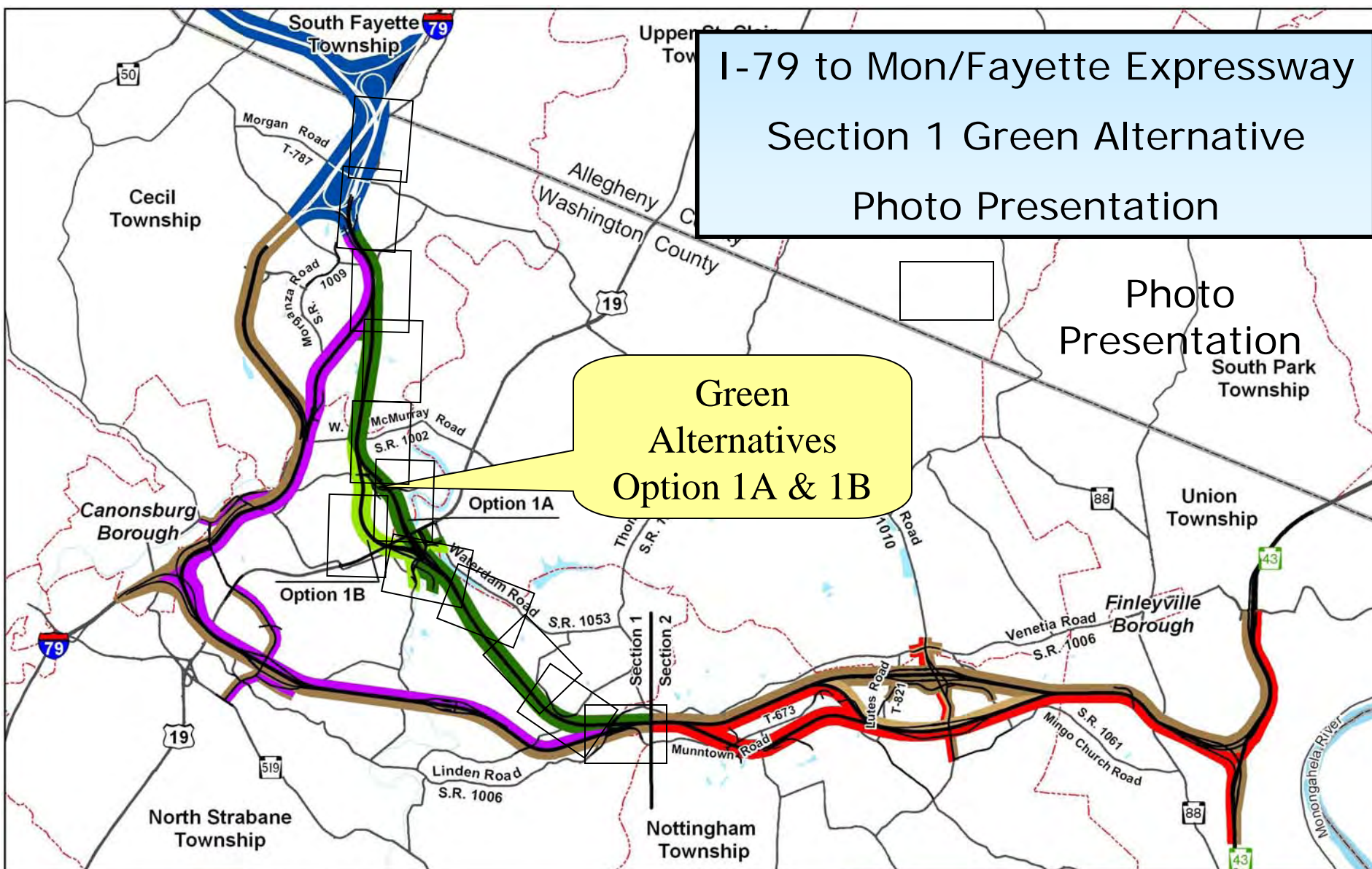
Option 1A & 1B

(Revised: January 2007)

I-79 to Mon/Fayette Expressway
Section 1 Green Alternative
Photo Presentation

Green
Alternatives
Option 1A & 1B

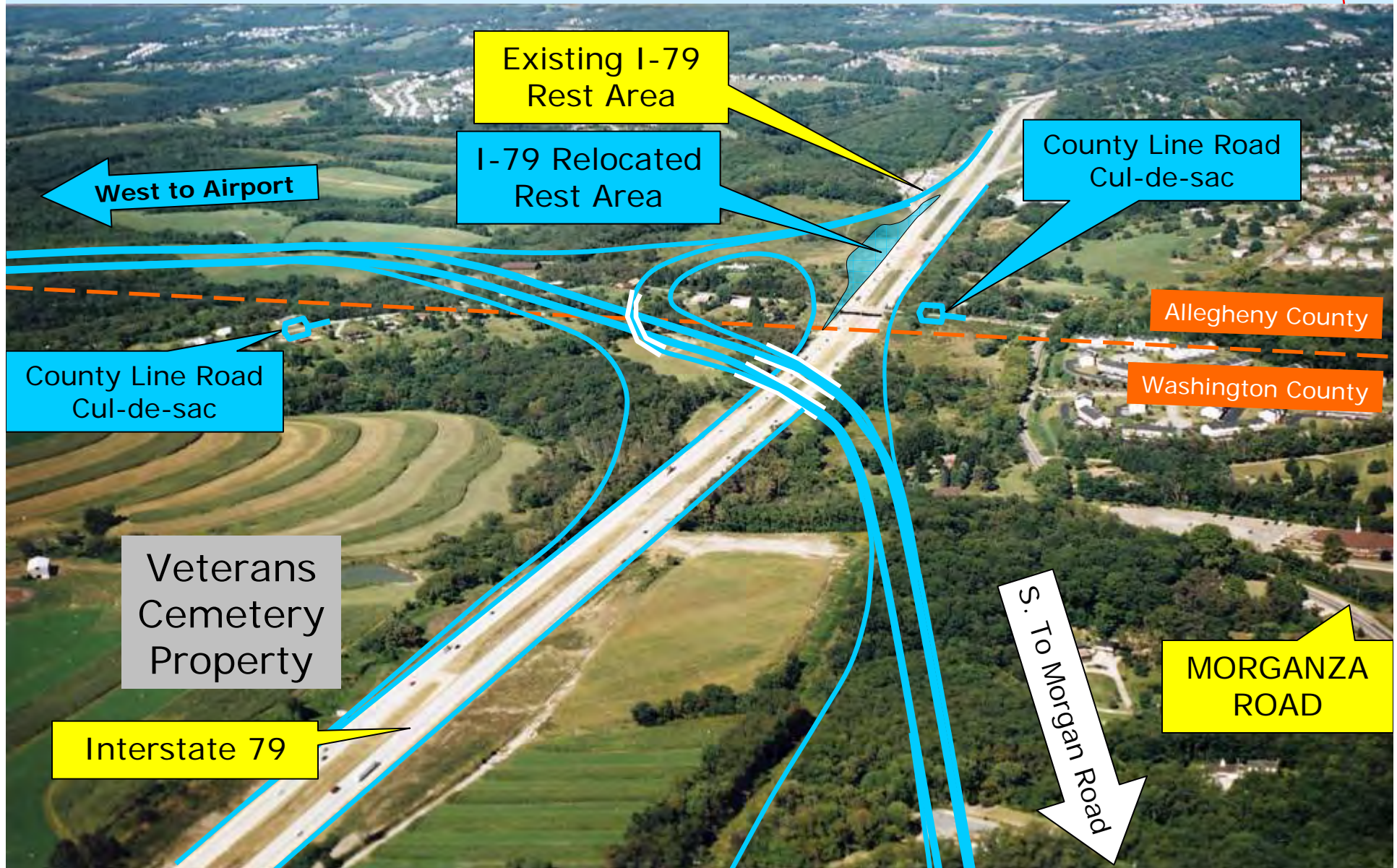
Photo
Presentation
South Park
Township



Section 1 Purple Alternative Tan Alternative Green Alternative Option 1A Green Alternative Option 1B	Section 2 Tan Alternative Red Alternative Tan-Red Alternative	Municipal Boundary Open Water County Boundary		Southern Beltway Transportation Project I-79 to Mon/Fayette Expressway Alternatives Advanced for Detailed Study
				Figure 1

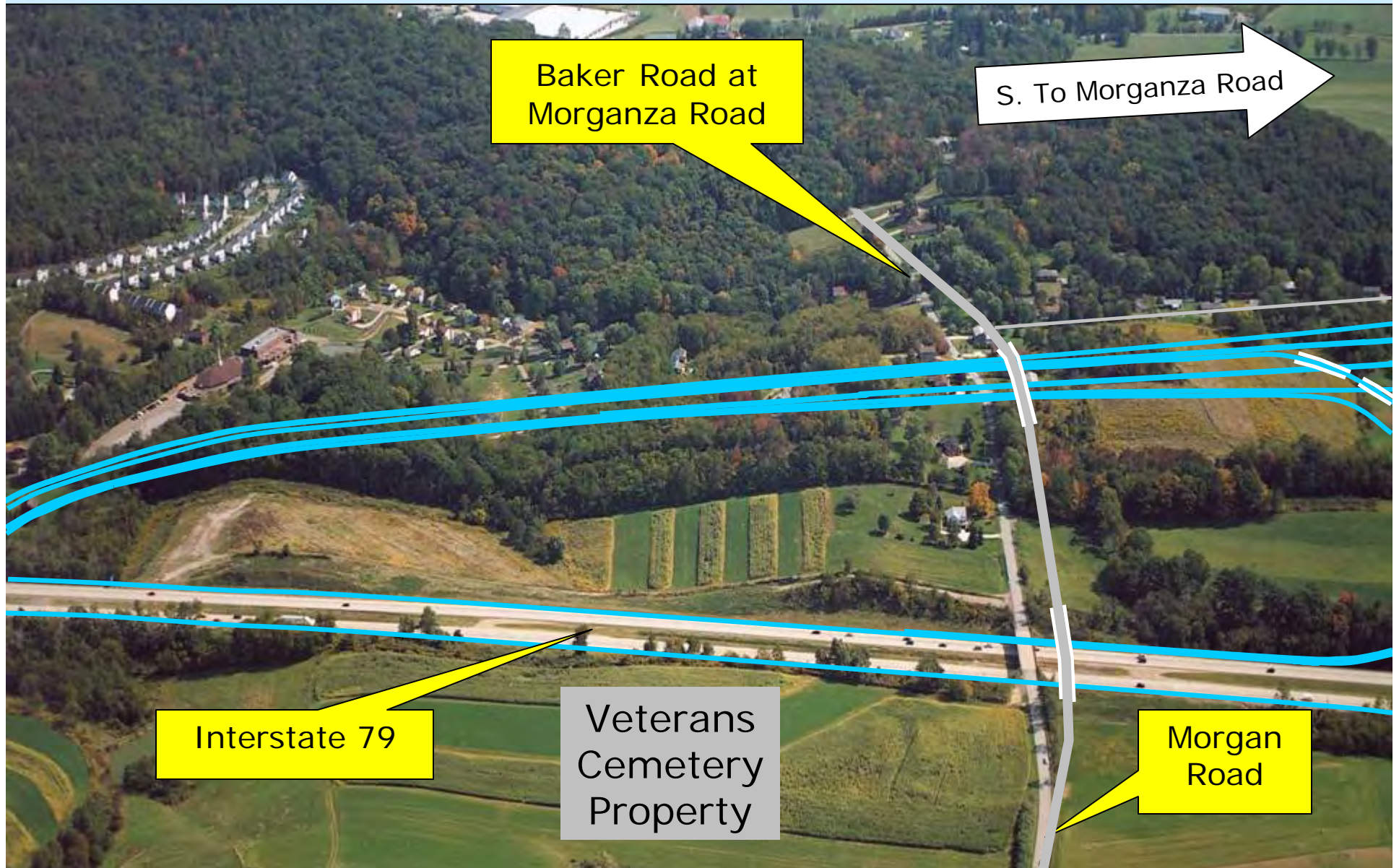
I-79 to Mon/Fayette Expressway – Green Alternative – Section 1

The Green Alternative would join the U.S. 22 to Interstate 79 southern Beltway Project near Morgan Road. The blue colored roadway/ramps would be constructed as part of the U.S. 22 to I-79 Southern Beltway Project.



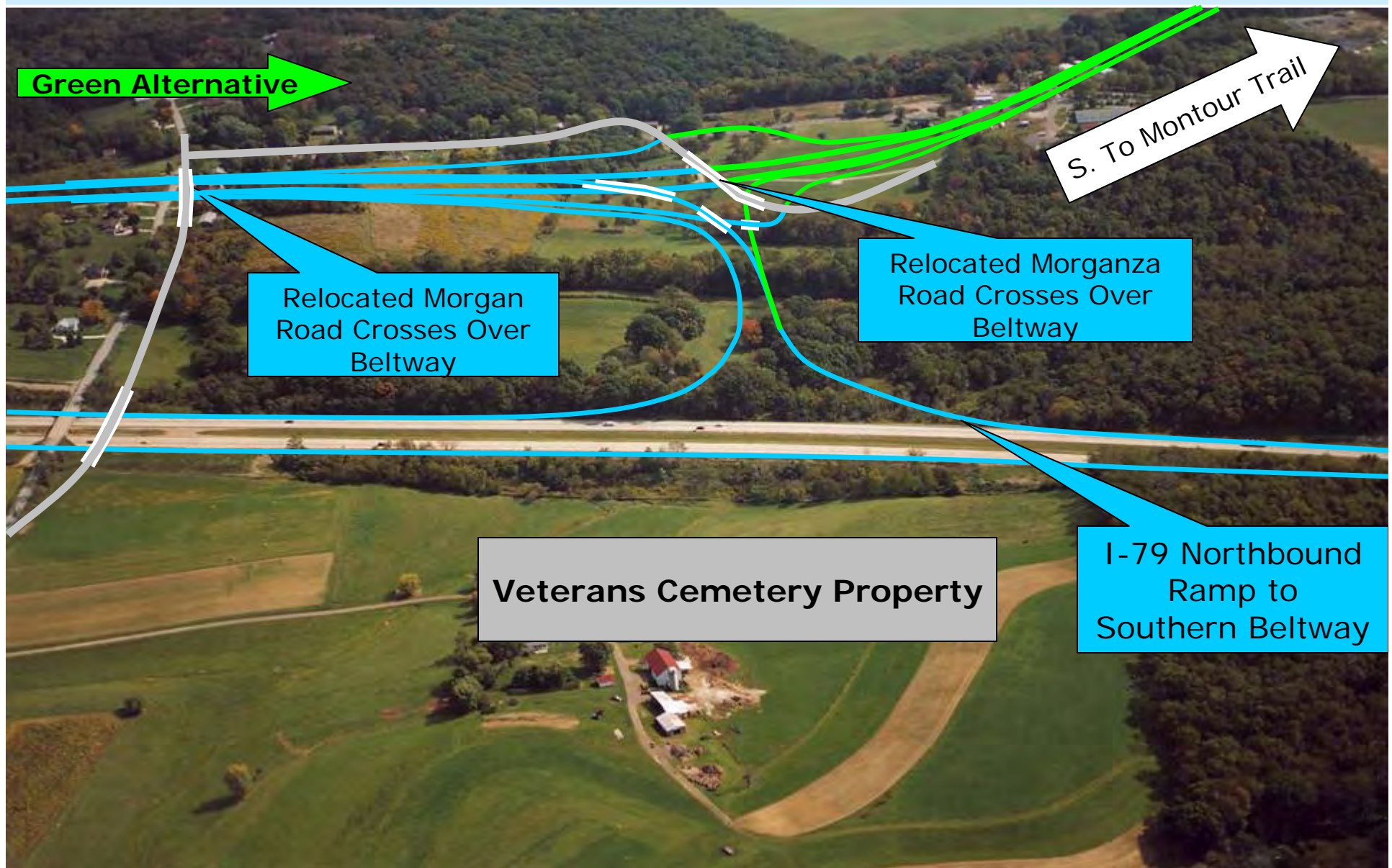
I-79 to Mon/Fayette Expressway – Green Alternative – Section 1

The Southern Beltway would cross under Morgan Road, west of the Morganza Road/Baker Road intersection in Cecil Township.



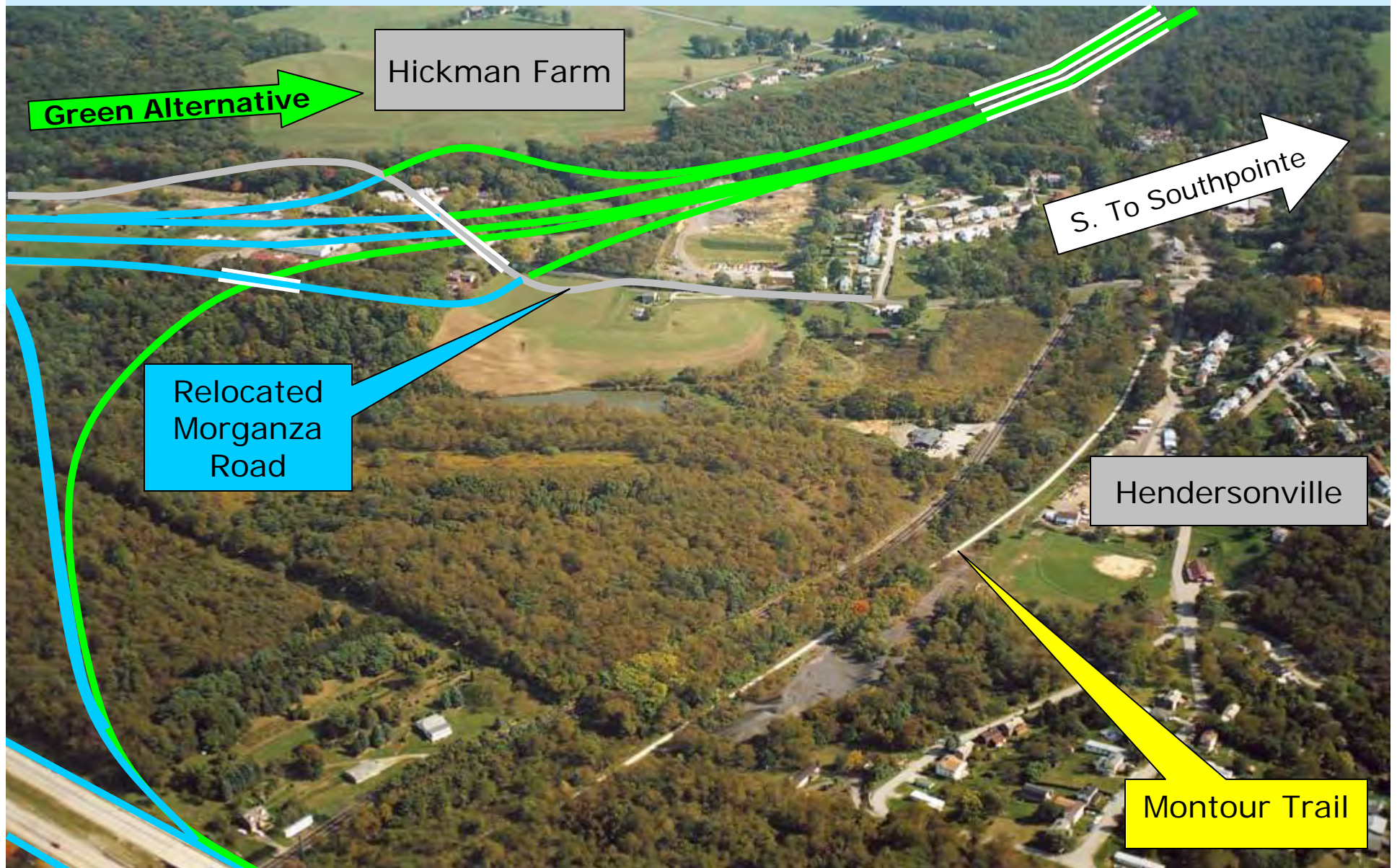
I-79 to Mon/Fayette Expressway – Green Alternative – Section 1

An Interchange would be constructed with Morganza Road providing local access. The northbound exit ramp from I-79 would provide access to the Southern Beltway towards the airport and towards U.S. Route 19 and Finleyville.



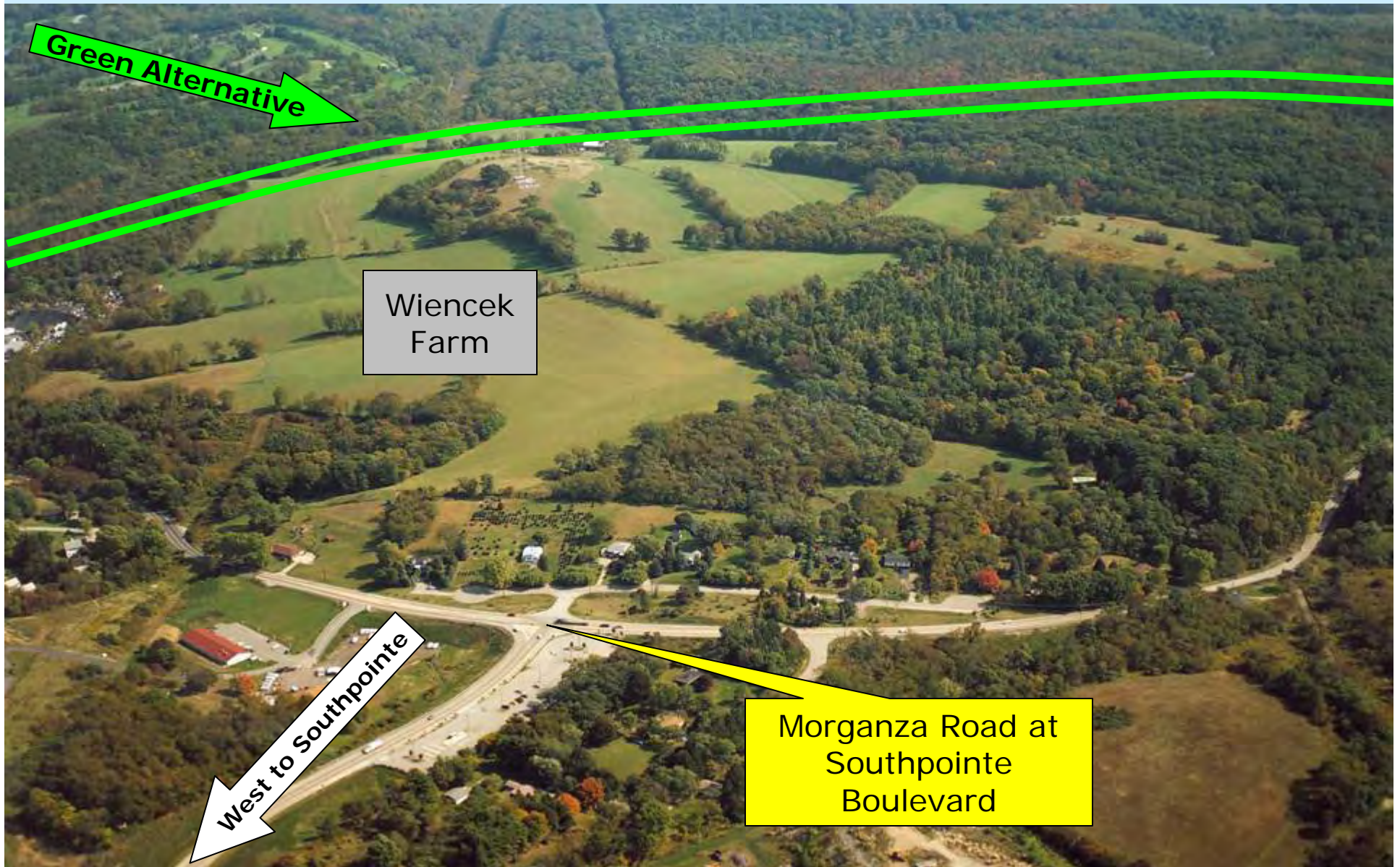
I-79 to Mon/Fayette Expressway – Green Alternative – Section 1

The Green Alternative would pass between the Hickman Farm and Hendersonville and would span Cecil-Henderson Road and the Mountour Trail.



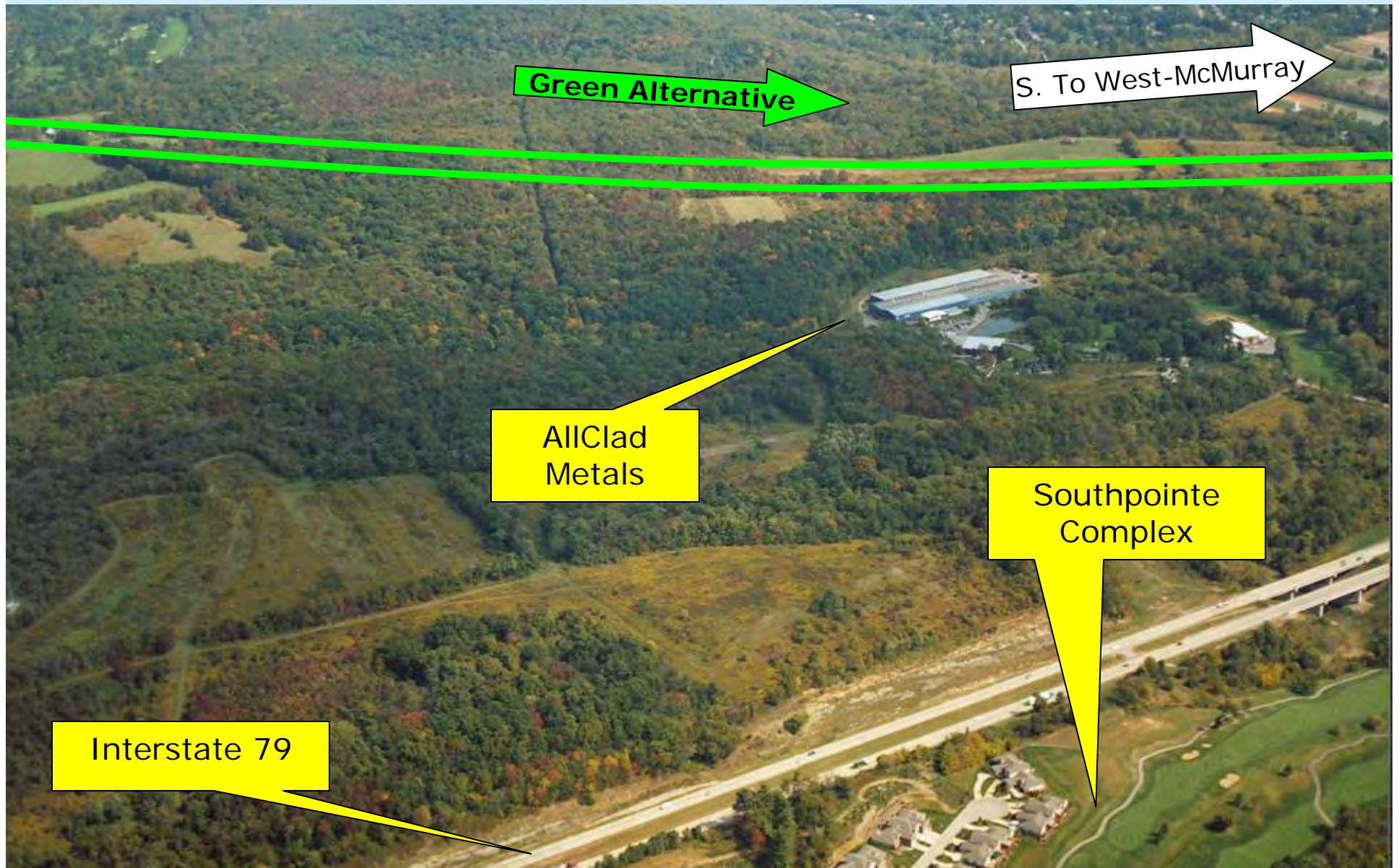
I-79 to Mon/Fayette Expressway – Green Alternative – Section 1

The Green Alternative proceeds in a southerly direction passing through a portion of the Wiencek Farm east of Morganza Road



I-79 to Mon/Fayette Expressway – Green Alternative – Section 1

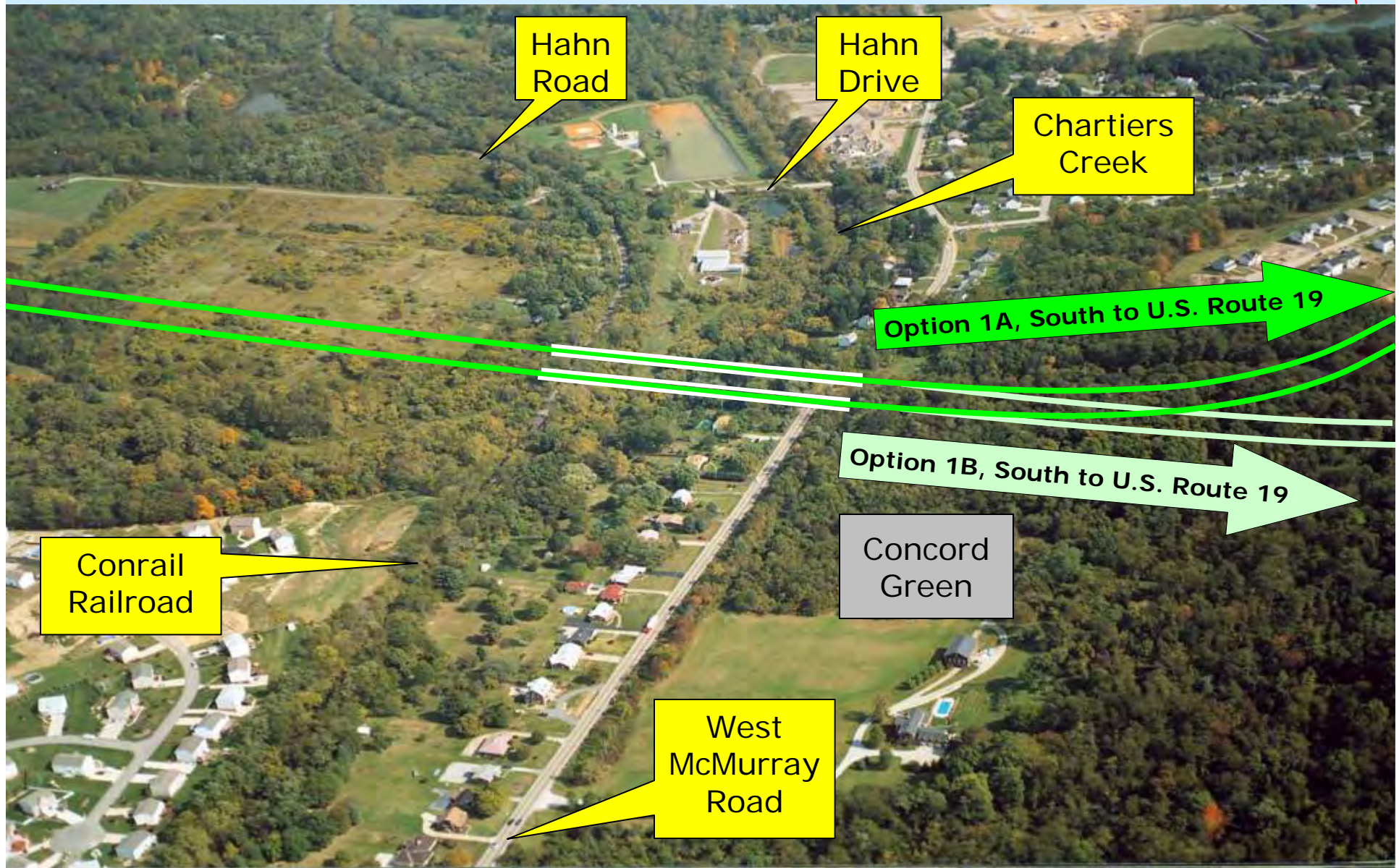
The Green Alternative would pass east of the AllClad Metals complex.



I-79 to Mon/Fayette Expressway – Green Alternative – Section 1

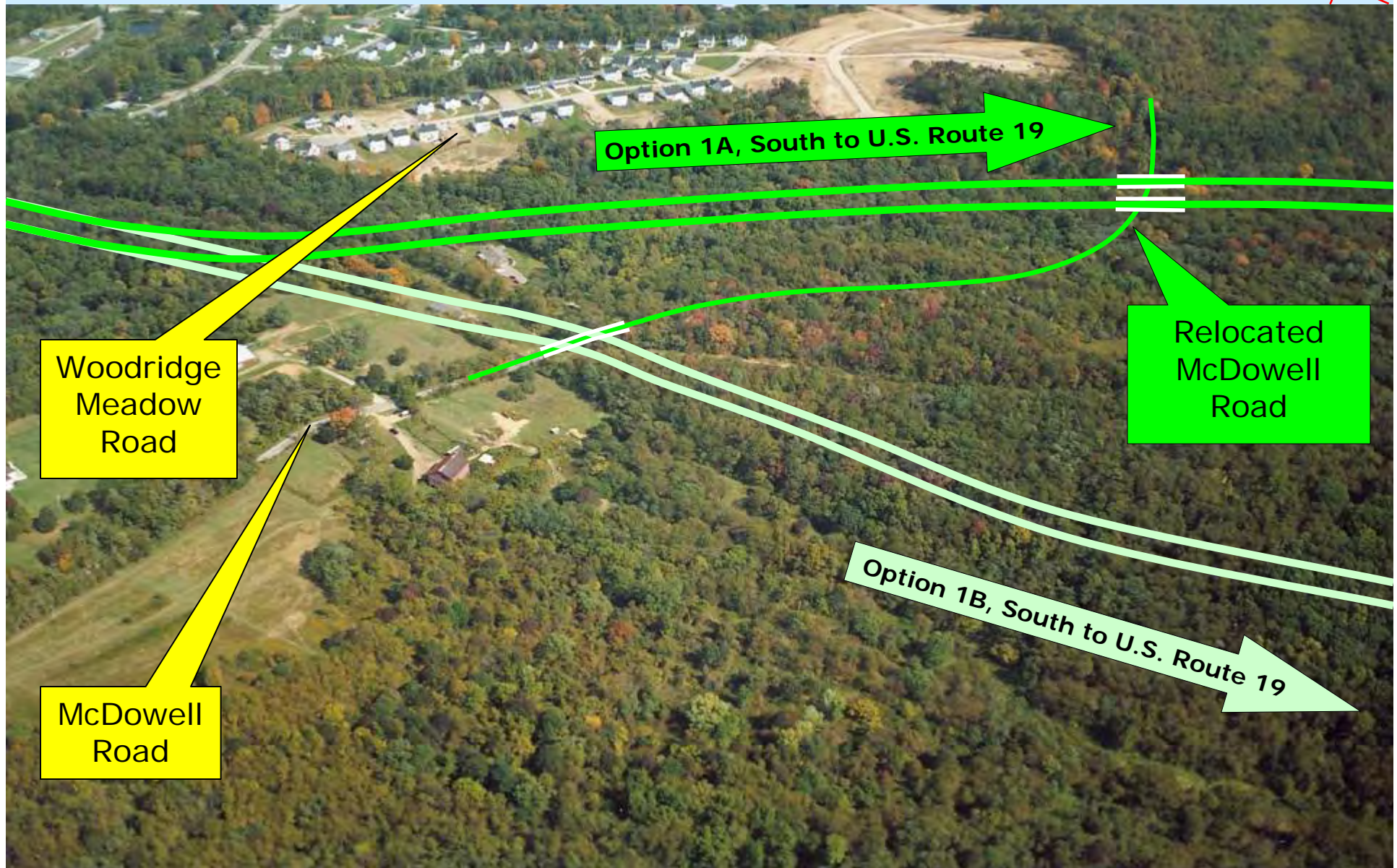
The Green Alternative would span Chartiers Creek, Conrail, & West-McMurray Road while avoiding Morgan's Point and Woodridge Meadows in North Strabane Township.

The Green Alternatives Options 1A & 1B diverge south of West McMurray Road 



I-79 to Mon/Fayette Expressway – Green Alternative – Section 1

The Green Alternative Option 1A would pass south of Woodridge Meadows prior to crossing Canonsburg Lake. The Green Avoidance Alternative, Option 1B, proceeds west of the Option 1A Alternative to avoid Canonsburg Lake property.



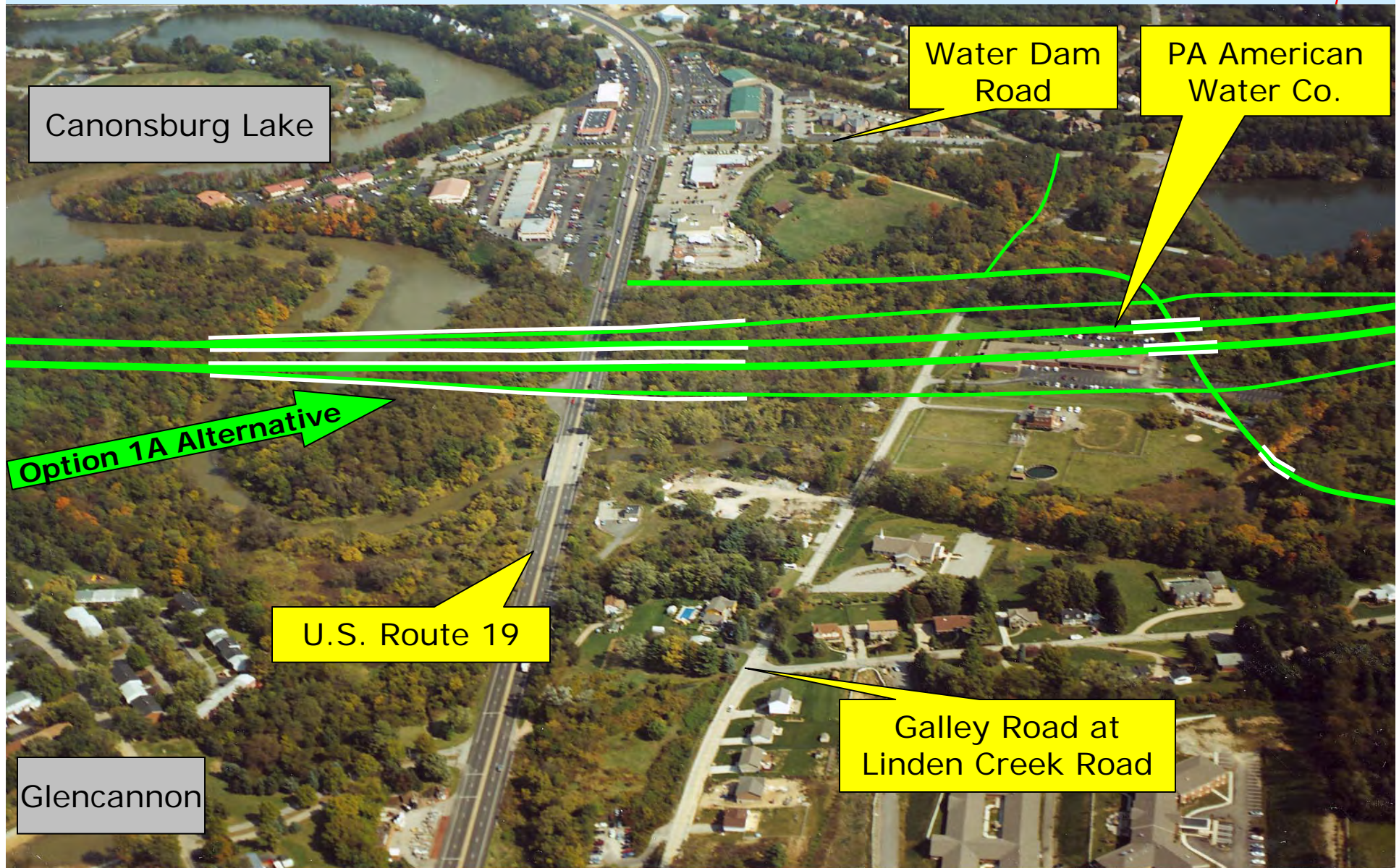
I-79 to Mon/Fayette Expressway – Green Alternative – Section 1

Option 1A crosses the southern portion of Canonsburg Lake with an interchange southeast of U.S. Route 19. The Option 1B passes through Glencannon to avoid the publicly owned Canonsburg Lake property.



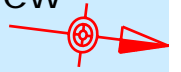
I-79 to Mon/Fayette Expressway – Green Alternative – Section 1

The Green Alternative Option 1A would span over U.S. Route 19 and a new interchange would be constructed southeast of U.S. Route 19. A connector road would be constructed to provide access to U.S. Route 19.



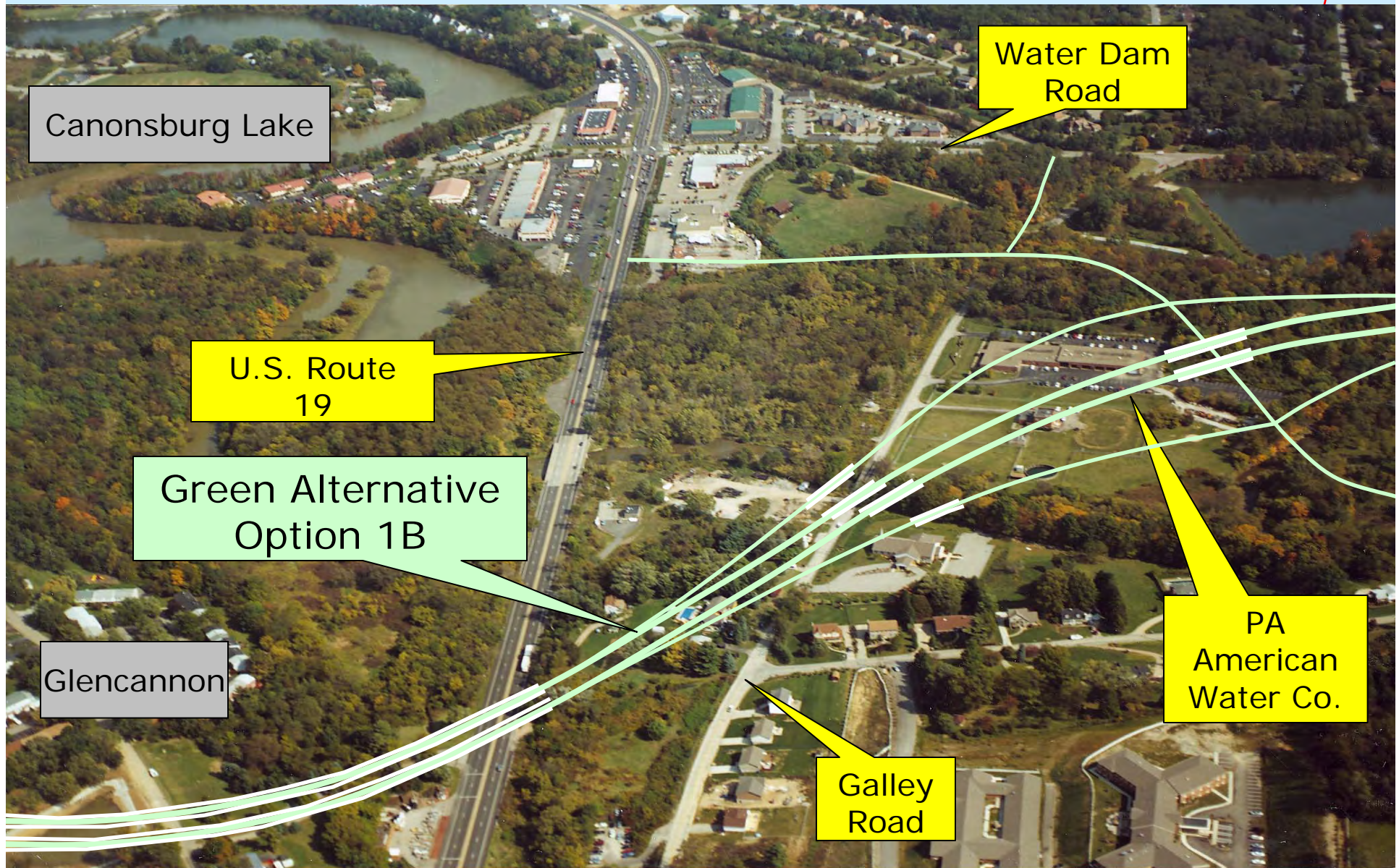
I-79 to Mon/Fayette Expressway – Green Alternative – Section 1

Computer rendering of Green Alternative Option 1A over U.S. Route 19 with a new interchange southeast of U.S. Route 19.



I-79 to Mon/Fayette Expressway – Green Alternative – Section 1

The Green Alternative Option 1B would go through the Glencannon community and cross U.S. Route 19. An interchange would be constructed to provide access to U.S. Route 19 and the Linden Creek Road area.



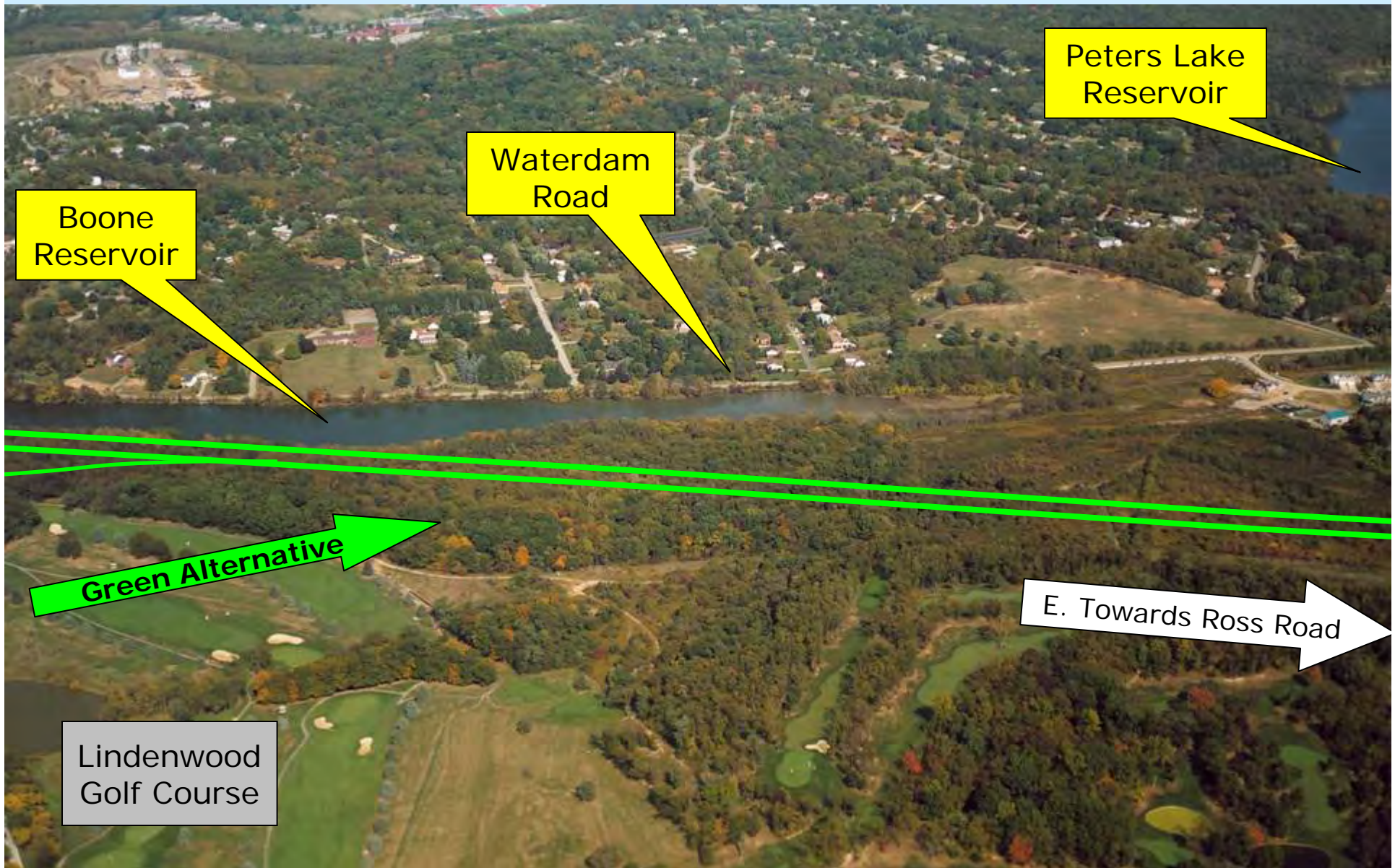
I-79 to Mon/Fayette Expressway – Green Alternative – Section 1

Computer rendering of the Option 1B (Alternative through Glencannon). The interchange for U.S. Route 19 would be offset to the east.



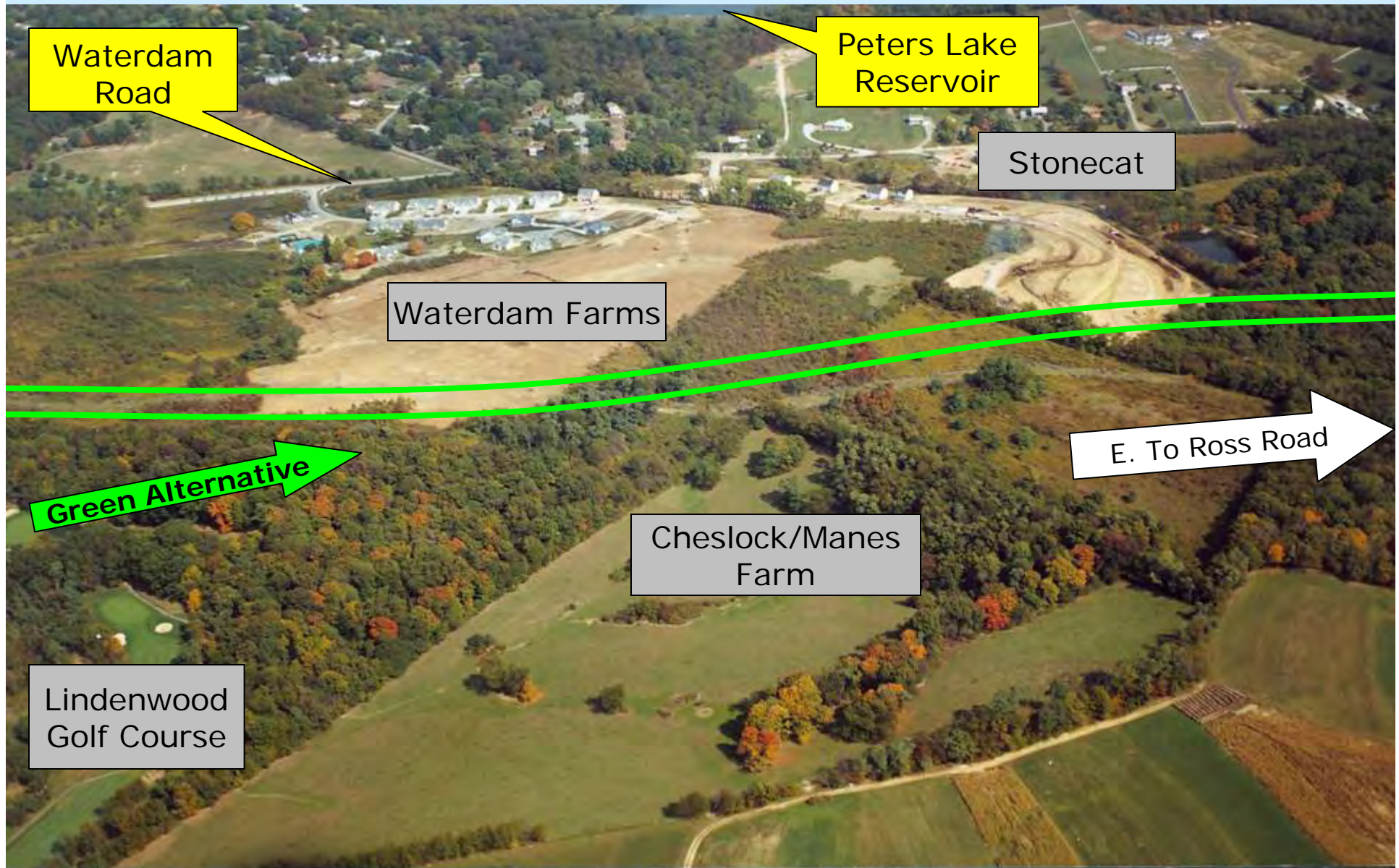
I-79 to Mon/Fayette Expressway – Green Alternative – Section 1

The Green Alternative Option 1A would pass between the Boone Reservoir and Lindenwood Golf Course. The Green Alternative Option 1B is identical to the Option 1A Alternative from this point to the east.



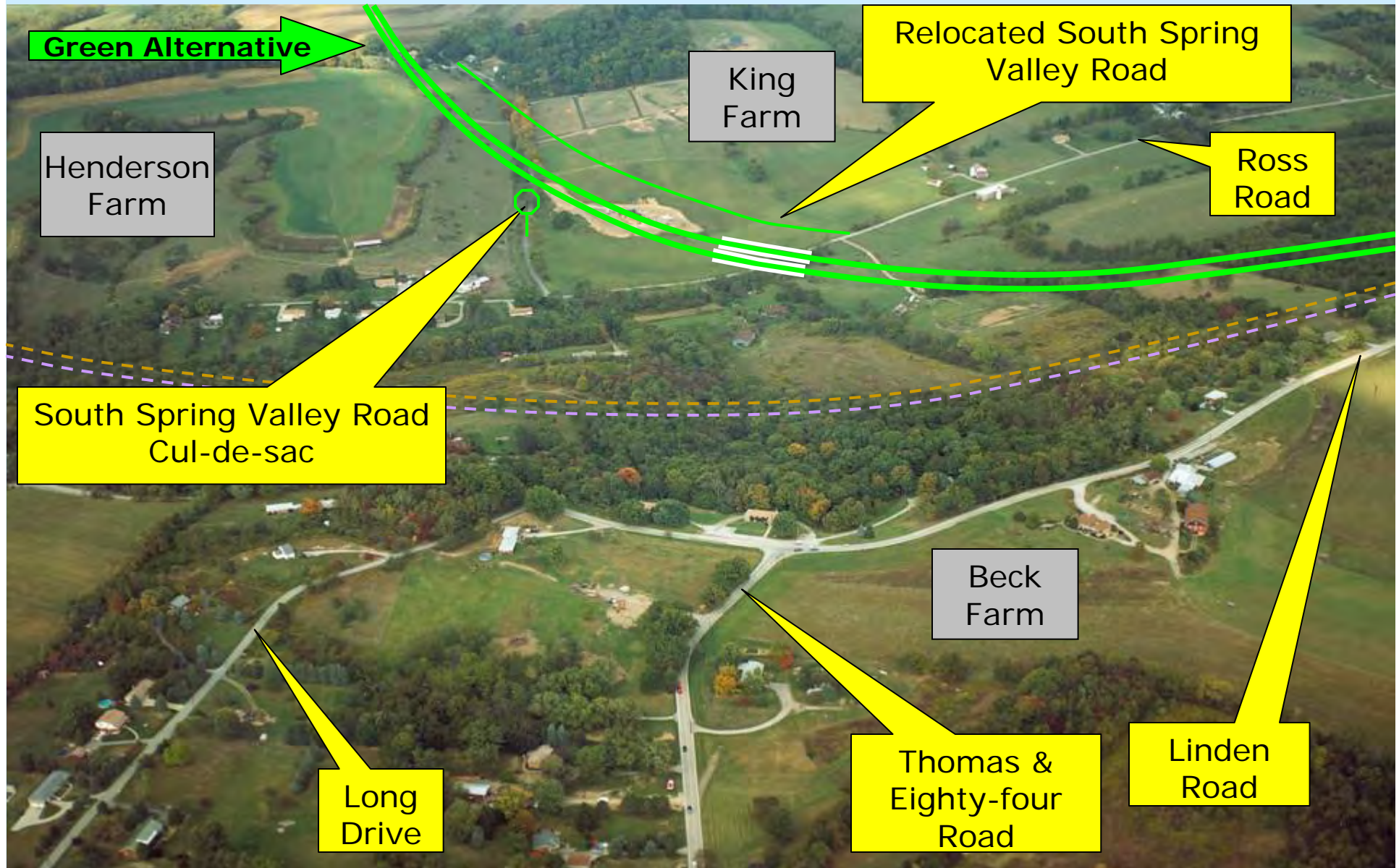
I-79 to Mon/Fayette Expressway – Green Alternative – Section 1

The Green Alternative would pass through the northern portion of the Manes Farm, a potentially eligible historic farm in North Strabane Township while minimizing impacts to Waterdam Farms Residential Developments along Waterdam Road.



I-79 to Mon/Fayette Expressway – Green Alternative – Section 1

The Green Alternative crosses the eastern portion of the Henderson Farm and a developed portion of the King Farm. South Spring Valley Road will be relocated and Ross Road in North Strabane Township will be spanned.



I-79 to Mon/Fayette Expressway – Green Alternative – Section 1

The Green Alternative would cross under Linden Road and pass south of the community of Thomas and merge with the Tan/Purple Alternatives near the North Strabane Township/Nottingham Township Boundary.

